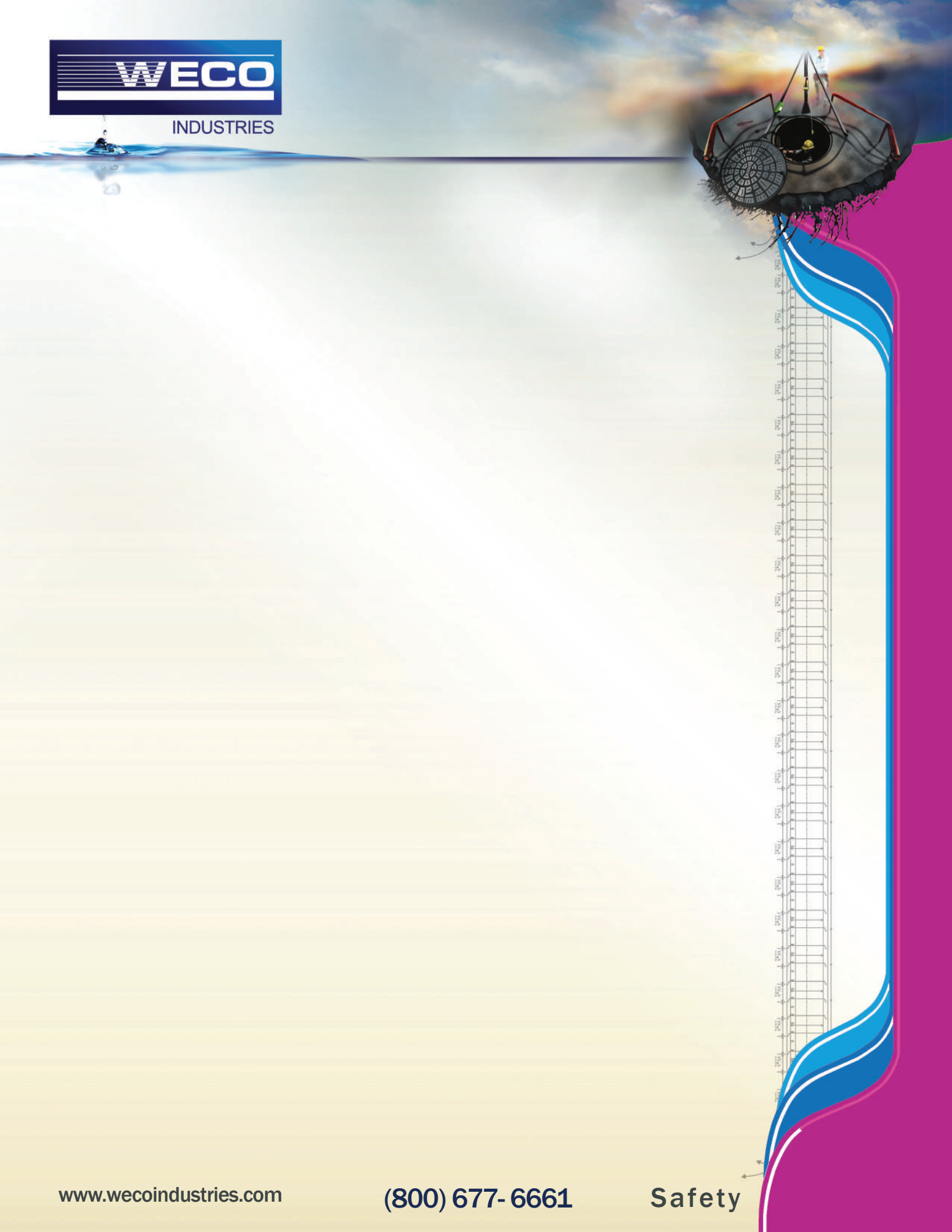




INDUSTRIES



LEL, O₂, H₂S, CO

GX-3R 4 Gas Confined Space



Smallest and Lightest 4 & 5 Gas Monitor

Standard Confined Space Gases

Gas Detected	Detection Range
Combustible Gases (Methane as standard)	0 - 100% LEL (1% LEL)
Oxygen (O ₂)	0 - 40.0% vol. (0.1% vol.)
Carbon Monoxide (CO)	0 - 2000 ppm (1 ppm)
Hydrogen Sulfide (H ₂ S)	0 - 200.0 ppm (0.1 ppm)
Carbon Monoxide (CO) H ₂ Compensated	0 - 2000 ppm (1 ppm)



SDM-3R

- Compatible with the GX-3R or GX-3R Pro
- Automate bump tests, calibrations, charging and data retrieval
- Operate up to 10 stations with 1 set of cal equipment



Clip-On Sampling Pump

- Available for the GX-3R and GX-3R Pro
- 100' sampling range
- Independent power supply



LEL, O₂, H₂S, CO, CO₂, SO₂

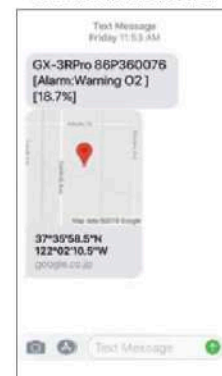
GX-3R Pro 5 Gas Confined Space



Standard Confined Space Gases

Gas Detected	Detection Range
Combustible Gases (Methane as standard)	0 - 100% LEL (1% LEL)
Oxygen (O ₂)	0 - 40.0% Vol. (0.1% vol.)
Carbon Monoxide (CO)	0 - 2000 ppm (1 ppm)
Hydrogen Sulfide (H ₂ S)	0 - 200.0 ppm (0.1 ppm)
Carbon Monoxide (CO) H ₂ Compensated	0 - 2000 ppm (1 ppm)
Sulfur Dioxide (SO ₂)	0 - 100.0% ppm (0.05% ppm)
	0 - 10.0% Vol (0.01%)
Carbon Dioxide (CO ₂)	0 - 10,000 ppm (20 ppm)

Lone Worker Notification

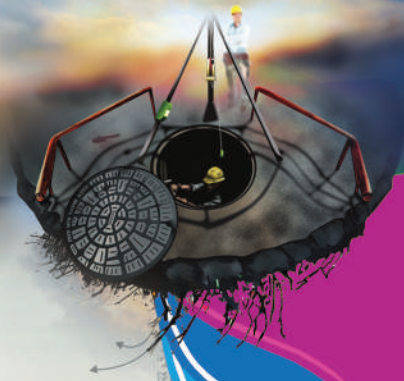


E-mail and text alarm notifications



RKI Link Phone App

- Bluetooth communication with IOS and Android phone app
- Direct readings from instrument
- Configure instrument settings
- Alarm notifications
- Instrument locator



Portable Instruments

6 Gas Sample Draw With PID, IR And Super Toxics

Monitor up to 6 gases:

- LEL, O₂, H₂S, CO
- 2 Smart sensor slots
 - PID for VOC's
 - IR for CH₄, HC, & CO₂
 - EC for NH₃, Cl₂, HCN, NO₂, & SO₂

6 Operating modes

- Normal
- Leak Check
- Inert
- Bar Hole
- Snap Log
- Benzene Specific Mode

PID Library of more than 600 VOC's

- Accepts 10.6, 11.7, and / or 10.0 PID lamps
- 50,000 ppb / 6,000 ppm ranges
- Easily choose a target VOC
 - User defined VOC list of 30
 - Recently used VOC list of last 8

Glove friendly glow in the dark buttons

Interchangeable battery options

- Lithium-ion pack operates 14 hours
 - Complete recharge in 3 hours
- Alkaline pack operates 8 hours

Weather & dust resistant

- IP-67

9 Languages

- English, Spanish, French, German, Italian, Japanese, Korean, Portuguese, Russian



LEL, O₂, H₂S, CO, NH₃, Cl₂, HCN,
NO₂, SO₂, CO₂, HC's, VOC's

GX-6000

Alarms

- 2 Adjustable gas alarms per channel
- Man down alarm
- Panic alarm
- 4 Alarm LED's
- Audible and vibration alarms
- Trouble alarms for low flow, sensor connection, low battery, circuit error and calibration

LED Flashlight

- On demand light source

LCD Display

- Auto flip display
- Peak bar graphs
- Adjustable auto backlight
- Customize order of gases
- Single gas view with large font and auto sequence

LEL protection mode

- Shields LEL sensor from damaging high hydrocarbon exposure

Intrinsically Safe

- ATEX / IECEx
- cCSA_{US}

New: Benzene Specific Option



PID Sensors (Smart Sensors)

Gas	Measuring Range	Reading Increment	Alarm Set Points
10.6 Lamp 600 VOC's	0 - 50,000 ppb	1 ppb: (< 5000 ppb) 10 ppb: (> 5,000 ppb)	A1: 5,000 ppb A2: 10,000 ppb
	0 - 6,000 ppm	0.1 ppm: (< 600 ppm) 1 ppm: (> 600 ppm)	A1: 400 ppm A2: 1,000 ppm
10.0 Lamp 300 VOC's	Benzene Specific 0.1 - 50 ppm	0.01 ppm (0 - 10 ppm) 0.1 ppm (10 - 50 ppm)	No Alarms
	0 - 100 ppm	0.01 ppm (0 - 10 ppm) 0.1 ppm (10 - 100 ppm)	A1: 5 ppm A2: 10 ppm
11.7 Lamp 600 + VOC's	0 - 1000 ppm	0.1 ppm	A1: 400 ppm A2: 1000 ppm

4 Gas Sensor Slots

Gases & Detectable Ranges

Gas	Measuring Range	Alarm Set Points
Catalytic		
Hydrocarbons (CH ₄ , std)	0 - 100% LEL	A1: 10% LEL A2: 50% LEL
Galvanic		
Oxygen (O ₂)	0 - 40% vol.	A1: 19.5 vol. A2: 23.5 vol.
Electro Chemical		
Carbon Monoxide (CO)	0 - 500 ppm	A1: 25 ppm
		A2: 50 ppm
		TWA 25 ppm
		STEL 200 ppm
Hydrogen Sulfide (H ₂ S)	0 - 100 ppm	A1: 5.0 ppm
		A2: 30.0 ppm
		TWA 1.0 ppm
		STEL 5.0 ppm

2 Smart Sensor Slots

Gases & Detectable Ranges

Gas	Measuring Range	Alarm Set Points
IR Sensors		
Carbon Dioxide (CO ₂)	0 - 10,000 ppm 0 - 10% vol.	A1: 5,000 ppm TWA 5,000 ppm STEL 30,000
Methane (CH ₄)	0 - 100% LEL / 0 - 100% vol.	A1: 10% LEL A2: 50% LEL
Hydrocarbons	0 - 100% LEL / 0 - 30% vol.	A1: 10% LEL A2: 50% LEL
Toxics (EC Sensors)		
Ammonia (NH ₃)	0 - 400 ppm	A1: 25 ppm A2: 50 ppm
Chlorine (Cl ₂)	0 - 10 ppm	A1: 0.5 ppm A2: 1.0 ppm
Hydrogen Cyanide (HCN)	0 - 15 ppm	A1: 5 ppm A2: 10 ppm
Nitrogen Dioxide (NO ₂)	0 - 20.0 ppm	A1: 3 ppm A2: 6 ppm
Sulfur Dioxide (SO ₂)	0 - 99.9 ppm	A1: 2 ppm A2: 5 ppm



SDM-6000
Calibration Station With
Touch Screen Display

LEL, O₂, H₂S, CO

Portable Instruments

**Confined Space / Leak Detector /
Bar Hole Sample Draw Monitor**

GX-2012

Monitors

- PPM/LEL/% vol CH₄
- O₂
- CO
- H₂S



- Internal hydrophobic filter
- 3 bright visual alarm LED's (top and sides)
- 95 db audible & vibration alarm
- Status indicators
 - Pump activity
 - Blinking heart (microprocessor status)
 - Battery level
- Time indicator
- Datalogging standard
 - Snapshot logging
 - Bar hole logging
 - Calibration and bump test records
- Combustible display automatically switches between % LEL and % volume
- Peak level bar display
- IP-67
- Glove friendly buttons
- ATEX / IECEx
- CSA



The GX-2012 is RKI's smallest personal 1-5 sensor gas monitor with a built in sample pump. Having 3 operating modes, the GX-2012 can be used for confined space, safety monitoring in it's Normal Operating mode; for leak investigation in Leak Check mode; and for underground leak checking in Bar Hole mode. When equipped with an optional TC sensor, the GX-2012 can measure 100% volume methane and dynamically auto range from % LEL to % volume. This is ideal for line purge testing.



Alkaline Battery Pack

Interchangeable Battery Packs



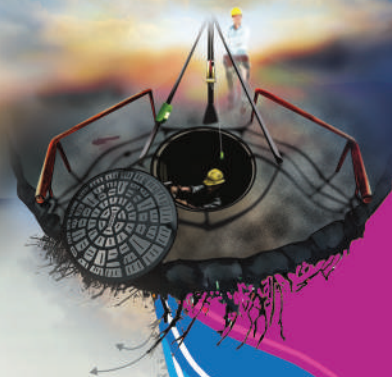
Lithium-Ion Battery Pack



**SDM 2012
Calibration Station**

Standard Confined Space Gases			
Gas Detected	Detection Range	Detection Principle	Alarm Levels
Combustible Gases (Methane as standard)	0 - 100% LEL 0 - 500 / 1,000 / 2,000 / 5,000 ppm	Catalytic combustion	1st alarm 10% LEL 2nd alarm 50% LEL Over alarm 100% LEL
% volume Methane	0 - 100% vol.	Thermal conductivity	No alarms for % vol. CH ₄
Oxygen (O ₂)	0 - 40.0% vol. (0.1% vol.)	Galvanic cell	Low alarm 19.5% High alarm 23.5% Over alarm 40.0%
Carbon Monoxide (CO)	0 - 500 ppm (1 ppm)	Electrochemical cell	1st 25 ppm 2nd 50 ppm TWA 25 ppm STEL 200 ppm Over 500 ppm
Hydrogen Sulfide (H ₂ S)	0 - 100.0 ppm (0.5 ppm)	Electrochemical cell	1st 5 ppm 2nd 30 ppm TWA 1 ppm STEL 5 ppm Over 100 ppm

- Bump test and calibration records copy to USB jump drive
- Save Bump Test and Calibration records
- Stand-alone station (no PC Required)
- Includes PC software for viewing / archiving bump test and calibration records
- Multiple modules connected to a PC (10 max)
- 2 Calibration gas ports



Portable Instruments

Single Gas Clip-On Personal Series

This single gas monitor is designed for personal protection from combustible hydrocarbons, oxygen deficiency, hydrogen sulfide, or carbon monoxide. The OX-03, HS-03, and CO-03 models continuously operate over 3,000 hours on (2) AAA size alkaline batteries.

The GP-03 operates for 35 hours on alkaline batteries and 30 on rechargeable Ni-MH. The replacement sensors are inexpensive, easily field replaceable, and are interchangeable with other RKI monitors such as the GX-2009 and GX-2012.



360° rotation alligator clip



LEL, O2, H2S and CO

- 4 Gases to choose from LEL, O₂, H₂S, or CO
- Operates 3,000 hours on alkaline batteries
- GP-03 operates 35 hours Alkaline, 30 hours Ni-MH
- Removable protective boot

- Comfortable to wear near breathing zone
- Alligator clip, rotates 360°
- 3 Year warranty, HS-03 & CO-03
- 2 Year warranty, GP-03 & OX-03



03 Series

SDM-03 Series Calibration Station



Single Gas Personal Monitor

CO, H2S, O2, O2/CO, CO (-H2)

GasWatch 3



Gas Detected	Detection Range	Detection Principle	03 Series	GW3
Carbon Monoxide (CO)	0 - 500 ppm (1 ppm)	Electrochemical	•	
	0 - 300 ppm (1 ppm)	Electrochemical		•
Hydrogen Sulfide (H ₂ S)	0 - 100 ppm (0.5 ppm)	Electrochemical	•	•
Oxygen (O ₂)	0 - 40% vol. (0.1% vol.)	Galvanic cell	•	•
Combustibles	0 - 100% LEL (1% LEL)	Catalytic combustion	•	
CO H ₂ Compensated	0 - 300 ppm (1 ppm)	Electrochemical		•
O ₂ / CO	0 - 40% vol. (0 - 300 ppm)	Electrochemical		•

- 5 Versions to choose from — CO, H₂S, or O₂
- CO Hydrogen compensated and dual CO/O₂ versions available
- 3-year warranty (2 years for O₂ sensor)
- Up to 4,000 hours of operation from 1 small, replaceable battery
- Sturdy IP-66/68 rated design



Safety

LEL, O₂, H₂S, CO, CH₄, NH₃,
AsH₃, Cl₂, HCN, PH₃, SO₂

Portable Instruments

**6 Gas (PID, TC, IR, and
Smart EC Sensors)**

EAGLE 2



The EAGLE 2 features a PID sensor for detecting high or low ppm levels (0-50 or 0-2,000) of VOC gases; % volume capability for CH₄ and H₂ using a TC (thermal conductivity) sensor; PPM or LEL hydrocarbon detection at the push of a button; infrared sensors for CO₂ (ppm or % volume), methane or hydrocarbons in LEL and % volume ranges; methane elimination feature for environmental applications; and a variety of super toxic gases. The EAGLE 2 has a strong internal pump with a low flow auto pump shut off and alarm, which can draw samples from up to 125 feet. The EAGLE 2 will continuously operate for over 18 hours on alkaline batteries or 20 hours on NiMH. Datalogging is a standard feature for all sensors on all versions.



IDEAL FOR:

- Confined space entry
- VOC monitoring
- Leak investigation
- Line purge testing
- Landfill monitoring
- Transformer gas testing
- EPA Method 21 for fugitive emissions



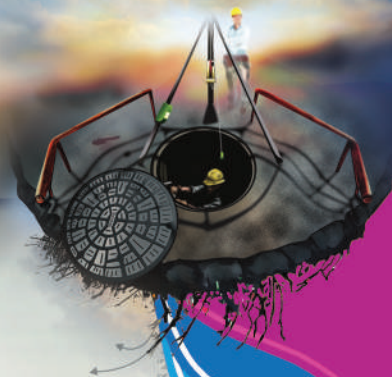
SDM-E2
Calibration Station

Standard Confined Space Gases

Hydrocarbons (CH ₄ , std)	0 - 100% LEL 0 - 50,000 ppm 0 - 5% vol.
Oxygen (O ₂)	0 - 40% vol.
Carbon Monoxide (CO)	0 - 500 ppm
Hydrogen Sulfide (H ₂ S)	0 - 100 ppm

Super Toxics and Other Gases

Ammonia (NH ₃)	0 - 75 ppm
Arsine (AsH ₃)	0 - 1.5 ppm
Carbon Dioxide (CO ₂) (IR Sensor)	0 - 10,000 ppm 0 - 5% vol. 0 - 60% vol.
Chlorine (Cl ₂)	0 - 3 ppm
Hydrogen Cyanide (HCN)	0 - 30 ppm
Hydrogen Sulfide (H ₂ S)	0 - 30 ppm
Methane (CH ₄) (IR Sensor)	0 - 100% LEL 0 - 100% vol.
HC IR	0 - 100% LEL 0 - 30% vol.
Phosphine (PH ₃)	0 - 1 ppm
Sulfur Dioxide (SO ₂)	0 - 6 ppm



Portable Instruments

6 Gas (Wide Range of Super Toxics)

ClO₂, F₂, HF, HCl, C₄H₁₀, NO₂, NO, PH₃, SiH₄, SO₂

EAGLE

FEATURES

- Monitor up to 6 gases
- Electrochemical, catalytic, and infrared sensor technologies
- PPm/LEL hydrocarbon detection
- Low flow alarm
- Powerful long-life internal pump with over 125' range
- Security "Adjustment Lockout" switch
- Up to 30 hours of continuous operation
- Alkaline or Ni-Cad capable
- Will operate in up to 2" of water
- Methane elimination switch for environmental use
- Meets EPA Method 21 protocol for fugitive emissions testing (most applications)
- Transformer gas testing versions available
- Intrinsically safe, CSA, C/US & UL Classified



Super Toxics and Other Gases (additional Toxic gases available)

Ammonia (NH ₃)	0 - 75 ppm
Arsine (AsH ₃)	0 - 1 ppm
	0 - 200 ppb
	0 - 5,000 ppm
Carbon Dioxide (CO ₂) (IR Sensor)	0 - 10,000 ppm
	0 - 5% vol.
	0 - 20% vol.
	0 - 60% vol.
Chlorine (Cl ₂)	0 - 3 ppm
Chlorine Dioxide (ClO ₂)	0 - 1 ppm
Fluorine (F ₂)	0 - 5 ppm
Hydrogen Fluoride (HF)	0 - 9 ppm
Hydrogen Chloride (HCl)	0 - 15 ppm
Hydrogen Cyanide (HCN)	0 - 30 ppm
	0 - 1 ppm
Hydrogen Sulfide (H ₂ S)	0 - 30 ppm

Super Toxics and Other Gases (additional Toxic gases available)

Methane (CH ₄) (IR Sensor)	0 - 100% LEL
	0 - 100% vol.
Isobutane (C ₄ H ₁₀) (IR Sensor)	0 - 100% LEL
	0 - 30% vol.
Nitrogen Dioxide (NO ₂)	0 - 15 ppm
Nitric Oxide (NO)	0 - 100 ppm
Phosphine (PH ₃)	0 - 1 ppm
Silane (SiH ₄)	0 - 15 ppm
Sulfur Dioxide (SO ₂)	0 - 10 ppm
Standard Confined Space Gases	
Hydrocarbons (CH ₄ , std)	0 - 100% LEL
	0 - 50,000 ppm
Oxygen (O ₂)	0 - 40% vol.
Carbon Monoxide (CO)	0 - 500 ppm
Hydrogen Sulfide (H ₂ S)	0 - 100 ppm

Single Toxic Gas Monitor

NH₃, AsH₃, CO, Cl₂, HCN, H₂S, PH₃, SO₂

SC-01

FEATURES

- Smart interchangeable sensors
- Unique extender cable for remote monitoring
- 250 hours of continuous operation
- Operates on 2 "AA" alkaline batteries
- Audible, visual, and vibration alarms
- Impact resistant protective rubber boot
- Intrinsically safe, CSA, C/US
- Data Logging standard



Gas	Range
Ammonia (NH ₃)	0 - 75 ppm
Arsine (AsH ₃)	0 - 1.5 ppm
Carbon Monoxide (CO)	0 - 75 ppm
Chlorine (Cl ₂)	0 - 3.00 ppm
Hydrogen Cyanide	0 - 15 ppm
Hydrogen Sulfide (H ₂ S)	0 - 30.0 ppm
Phosphine (PH ₃)	0 - 1.00 ppm
Sulfur Dioxide (SO ₂)	0 - 6.00 ppm

Formaldehyde Specific Monitor

HCHO

FP-31

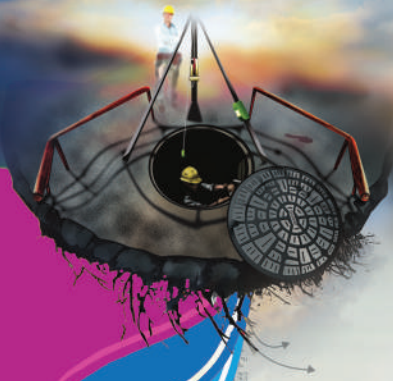
The FP-31 is a highly specific gas detector utilizing a proprietary colorimetric paper tablet to detect Formaldehyde. The instrument has a digital readout of the gas concentration on an LCD display. Readings are of average formaldehyde exposure over a selectable 15 minute or 30 minute period. This instrument does not respond to typical interference gases such as acetaldehyde, acetone, alcohols, ammonia, benzene, carbon monoxide, toluene or xylene.

FEATURES

- Specific to formaldehyde
- No interferences
- Built-in sample draw pump
- Colorimetric tablet method
- Stores 99 readings
- Operates for 12 hours
- datalogging



FP-31 Detection Ranges	
30 Minute Test	0 - 0.4 ppm (0.005 ppm increment)
15 Minute Test	0 - 1.0 ppm (0.01 ppm increment)



Portable Instruments

HC, CH₄, O₂

Dual Gas IR With Marine Approvals

RX-8000

FEATURES

- Real time detection for 100% LEL/ 100% volume HC and O₂
- 3 Bright alarm LED indicators
- Loud alarm buzzer with 95 dB
- 30 meter sample range
- Water and dust resistant IP-67
- Charge display with bar graph and auto backlight
- 3 Bright LED alarm windows
- Lithium-ion rechargeable battery (optional)



Target Gas	Combustibles (I-C4H10 or CH ₄ calibration)		Oxygen (O ₂)
Detection Principle	Non-Dispersive Infrared		Galvanic cell
Detection Range (Increments)	0 - 100 vol% (0.5 vol%)	0 - 100 LEL% (0.5% LEL)	0 - 40% (0.1%)
Accuracy	± 5 vol%	± 5% LEL	Range 0 - 25% ± 0.7% Range 26 - 40% ± 3.0%
Response Time	T90 within 30 seconds		T90 within 20 seconds
Sampling Method	Sample Draw: Minimum 0.75L/min		
Power Source	Lithium-ion battery (3 hours for a full charge) Standard AA Alkaline battery (3pcs) Option		
Continuous Operation	AA Alkaline battery: more than 10 hours Lithium-ion battery: more than 15 hours		
Operating Temp & Humidity	-20 - + 50C (-4 - + 122 F) below 95% Rh (Non-condensing)		
Dimensions & Weight	Approx. 154 (W) x 81 (H) x 127 (D) mm Approx. 1.0 Kg Approx. 6.1" (W) x 3.1" (H) x 5.0" (D) Approx. 2.4lb		
Explosion Proof	EX ia II C T4		
Additional Features	Indication to show operation (pilot indicator and pump driving indicator), Activated confirmation beep and LED's flash (every minute), Pump stop function, Bump test function, IrDA communication, Data logger, Password protection		
Standard Accessories	Lithium-ion battery, AC powered charger (100V-240V), Gas sampling probe, Gas sampling hose (3.2 ft), Neck / shoulder strap, Filter tube, Strap for filter tube, Manual		



Certifications:
IECEX, ATEX, TIIS, HK
Complying to IEC60079-29-1, EN50104

H₂S, HC, CH₄, CO₂

3 and 4 Gas IR with Marine Approvals

RX-8500 / 8700

FEATURES

- Dual range detection of % vol. and % LEL for CH₄ or HC
- Accurately monitor inert locations for CH₄ / HC
- Dual Range H₂S 0-100 & 0-1,000 ppm
- High range H₂S 0-1,000 ppm available (RX-517)
- Explosion proof / Intrinsically safe design
- Datalogging (Max 30 hours of interval trend)

LNG Carriers

RX-8500: CH₄ / O₂ (40% vol.) / CO
(1,000 ppm) / CO₂ (20% vol.)

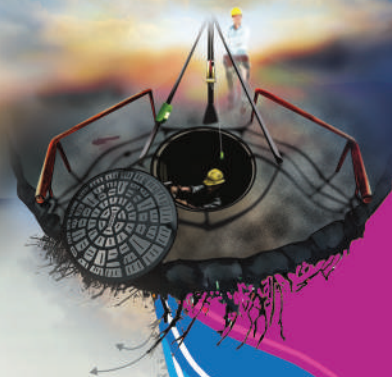
Oil Tankers

RX-8700: HC / O₂ / H₂S (1,000 ppm) & (100 ppm)

Certifications:

ATEX / IECEx approved
(Ex ia IIC T4) / MED





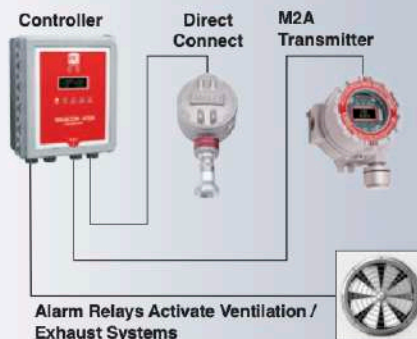
Wall Mount Controllers

Beacon Series

Each channel also has dedicated fully configurable relays and each controller has a bank of common relays. The common relays can be configured as additional relays on the Beacon 410A allowing for more alarm relays, optional on Beacon 800. Each channel provides a 4-20mA output signal. A digital Modbus interface for remote communication of data via a Modbus network is standard on the Beacon 410A.

A fully configurable, high visibility strobe is available as an option (except Beacon 800). The unit can be powered from 115/220 VAC, or an external 24 VDC source. A trickle charging battery backup feature with battery assembly is also available.

- Accepts direct wire sensors for: LEL, O₂, H₂S, CO, CO₂, Toxic direct wire sensors
- Digital display of gas and concentration
- Accepts any 4-20 mA transmitter
- Provides 4-20 mA output
- Programmable alarm levels
- Configurable alarm relays per channel
- Programmable common relays — Beacon 410A
- Audible alarm with reset button
- Weatherproof, NEMA 4X enclosure
- 115/220 VAC or 24 VDC operation
- Built-in trouble alarm with relay
- RFI / EMI resistant



Safety

	Alarm levels per channel	Relays per channel	Common relays	Direct connect sensors	
 Beacon 110	1	2	3	N/A	Yes
 Beacon 200	2	2	3	3	Yes
 Beacon 410A	4	3	3	5	Yes
 Beacon 800	8	2	3	3	No

LEL, H₂, H₂S, CO, O₂, CO₂, CH₄, HC,
NH₃, ASH₃, Cl₂, ClO₂, PH₃, HCN, SO₂

Fixed Systems Detector Assemblies

Explosion / Non Explosion Proof Sensor Stand Alone Transmitter

M2A

The M2A™ model is an explosion proof transmitter that can operate as a stand-alone system or as part of a system connected with an analog or digital signal to a controller, PLC, or DCS. A non explosion proof version is also available for certain gases.

The M2A utilizes a magnetic wand technique for performing non-intrusive calibration. The housing does not need to be opened for zeroing or calibration, making it unnecessary to declassify the area for routine maintenance. It is designed so that a complete field calibration can be performed by one person.

FEATURES

- Direct digital readout
- H₂ Specific version available
- Explosion proof housing
- Operates independently or with any controller, PLC or DCS
- Non intrusive calibration via magnetic wand
- 2 programmable alarm relays, plus fail relay
- Auto zero drift correction
- Remotely mount sensor with calibration adapter
- IR sensors available for LEL & CO₂, % vol. CH₄ & HC



LEL, H₂, H₂S, CO, O₂, CO₂, CH₄, HC,
NH₃, ASH₃, Cl₂, ClO₂, PH₃, HCN, SO₂

Explosion / Non Explosion Proof Sensor / Transmitter

S2

The S2 Series transmitter electronics are encased inside a potted package to avoid damage from mechanical abuse or corrosion, and housed in an explosion-proof enclosure. Some sensors are available as explosion-proof with flame arrestors and approved for use in hazardous atmospheres. S2 transmitters are also available with stainless steel enclosures.

Field calibration can be performed easily and quickly by one person. The only tools required to calibrate the S2 Series are a voltmeter, screwdriver, and cal gas. The amplifier has test jacks for connecting to a voltmeter for calibration purposes.

FEATURES

- Explosion proof housing
- Stainless steel enclosures available
- Patented water repellent sensor coating
- IR sensors available for LEL & CO₂, % vol. CH₄ & HC
- H₂ Specific LEL and ppm versions available
- Remotely mount sensor with calibration adapter



LEL, H₂, H₂S, CO, O₂, CO₂, CH₄, HC,
NH₃, ASH₃, Cl₂, ClO₂, PH₃, HCN, SO₂

Explosion / Non Explosion Proof Sensor

Direct Connect

The Direct Connect sensors can be used in two different ways. The sensors can be mounted directly to the controllers as a complete stand alone system, or they can be mounted to explosion proof junction boxes for remote detection.

The toxic sensors are electrochemical type plug-in sensors, which provide high specificity, fast response, and long life. The plug-in design allows quick replacement in the field with no tools required.

The Direct Connect sensors can be used either indoors or outdoors. The flame arrestors for the explosion-proof versions utilize a patented coating, which make them water repellent. Also, splash-guards are available for use in wet environments. An optional stainless steel junction box is available for corrosive environments.

FEATURES

- Connect directly to a Beacon controller
- Explosion proof housing
- Stainless steel enclosures available
- IR sensors available for LEL & CO₂, % vol. CH₄ & HC
- Patented water repellent sensor coating
- Remotely mount sensor with calibration adapter



Fixed Systems Detector Assemblies

Smart Sample Draw Transmitter

LEL, O₂, Toxics

GD-70D

Safety

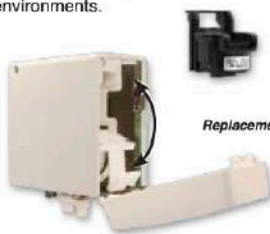
GD-70D Toxic Gases & Ranges

Measurable Gases	Range
Ammonia	0 - 75 ppm
Arsine	0 - 0.2 or 1.5 ppm
Boron Trichloride	0 - 15 ppm
Boron Trifluoride	0 - 9 ppm
Bromine	0 - 1 ppm
Carbon Monoxide	0 - 75,150,300 ppm
Chlorine	0 - 3 ppm
Chlorine Trifluoride	0 - 0.6 ppm
Diborane	0 - 0.3 ppm
Dichlorosilane	0 - 15 ppm
Diethylamine	0 - 15 ppm
Dimethylamine	0 - 15 ppm
Disilane	0 - 15 ppm
Fluorine	0 - 3 ppm
Germane	0 - 0.8 ppm
Hydrogen Bromide	0 - 6 or 9 ppm
Hydrogen Chloride	0 - 6 or 15 ppm
Hydrogen Cyanide	0 - 15 ppm
Hydrogen Fluoride	0 - 3 or 9 ppm
Hydrogen Selenide	0 - 0.2 ppm
Hydrogen Sulfide	0 - 1 or 30 ppm
Nitric Oxide	0 - 100 ppm
Nitrogen Dioxide	0 - 9 or 15 ppm
Nitrogen Tetraoxide	0 - 15 PPM
Ozone	0 - 0.6 ppm
Phosphine	0 - 1 ppm
Silane	0 - 15 ppm
Silicon Tetrachloride	0 - 15 ppm
Silicon Tetrafluoride	0 - 9 ppm
Sulfur Dioxide	0 - 6 ppm
Sulfur Tetrafluoride	0 - 9 ppm
Tetraethyl Orthosilicate	0 - 15 ppm
Trichlorosilane	0 - 15 ppm
Trimethylamine	0 - 15 ppm
Tungsten Hexafluoride	0 - 9 ppm

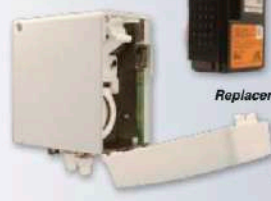
The GD-70D smart sample-draw transmitter offers an array of plug and play intelligent sensor technologies, including electrochemical sensors for a wide range of toxic gases and oxygen; MOS for H₂, IPA, and methanol; catalytic sensors for combustibles; and a pyrolyzer sensor for TEOS and NF₃.

These smart sensors retain all calibration and sensor-specific data in non-volatile memory, so sensors can be hot-swapped in the field with no programming required. The sensors also retain calibration information, which means they can be conveniently calibrated separate from the transmitter, avoiding transport of calibration gases to field locations.

The long life high capacity pump and wide variety of sensing elements are replaceable in a few seconds, with no tools required! The GD-70D can be used as a stand-alone device, offering a number of communication protocols to existing PLC systems, or can be integrated with RKI's Beacon series of single and multi-channel controllers. An optional NEMA 4X enclosure is available for harsh environments.



Replacement Pump



Replacement Sensor

TOOL FREE
MAINTENANCE

SENSOR UNIT

Model	ESU	SGU	SSU	OSU	NCU
Detection principle	Electrochemical cell	Semiconductor	Pyrolysis-particle	Galvanic cell	Catalytic combustion
Gas detected	Refer to table of toxic gases	H ₂ , CH ₄ , IPA, Methanol, R-32	0-15ppm TEOS in air	0-25% O ₂ in air	0-100% LEL H ₂ , CH ₄ , and others
Self diagnosis function	Sensor trouble, system failure				
Date logging function	Event history, alarm history, calibration history, Alarm trend (60 sec. before / after 1st alarm)				

Diffusion Sensor / Transmitter for Toxic Gases

Wide Range of Toxics

GD-K88Ai



- Diffusion Style head
- Digital readout of gas name and concentration
- External control buttons for easy maintenance
- Intrinsically safe design with optional intrinsic safety barrier

- Quick response sensors
- Many toxic sensors available
- 3 to 5 year typical sensor life
- Low cost of ownership
- Weather proof enclosure available



Weather Proof housing for GD-K88-4X

Partial List Of Detectable Gases. Contact RKI for gases or ranges not listed

Ammonia (NH ₃)	0 - 75.0 ppm	Fluorine (F ₂)	0 - 6.0 ppm	Nitrogen Dioxide (NO ₂)	0 - 15.0 ppm
Arsine (AsH ₃)	0 - 0.20 ppm	Hydrogen Chloride (HCl)	0 - 15.0 ppm	Ozone (O ₃)	0 - 1.0 ppm
Bromine (Br ₂)	0 - 1.00 ppm	Hydrogen Cyanide (HCN)	0 - 30 ppm	Phosphine (PH ₃)	0 - 1.0 ppm
Chlorine (Cl ₂)	0 - 3.0 ppm	Hydrogen Fluoride (HF)	0 - 9.0 ppm	Silane (SiH ₄)	0 - 15.0 ppm
Chlorine Dioxide (ClO ₂)	0 - 1.00 ppm	Hydrogen Sulfide (H ₂ S)	0 - 30.0 ppm	Sulfur Dioxide (SO ₂)	0 - 6 ppm
Carbon Monoxide (CO)	0 - 150 ppm	Hydrogen Sulfide (H ₂ S)	0 - 1.00 ppm	Optional	0 - 30 ppm
Diborane (B ₂ H ₆)	0 - 0.30 ppm	Nitric Oxide (NO)	0 - 100.0 ppm		

Fixed Systems Detector Assemblies

O₂, CO, CO₂

Indoor Stand Alone

OX-600 / EC-600 / RI-600

The OX-600, EC-600, and RI-600 models are indoor, standalone monitors that detect Oxygen (O₂), Carbon Monoxide (CO), and Carbon Dioxide (CO₂). It's low-profile design is equipped with a unique tri-color display, which changes color as each alarm level is reached.

	OX-600	EC-600	RI-600
Detection Range	0 - 25 vol%	0 - 150 ppm (1ppm / digit)	0 - 2000 / 5000 / 10,000 ppm
	0 - 2% / 0 - 5 vol%		

FEATURES

- Operates with or without a controller
- Tri-color visual alarm display: Green=Normal, Yellow=Alarm 1, Red=Alarm 2**
- Large easy to read digital display
- Three power options: 115 VAC, 24 VDC, or 2 AA alkaline
- Operates up to 1 year on one set of AA alkaline batteries*
- Pressure compensation eliminates false alarms caused by pressure change
- Remote mount sensor cable available*



* Not available for RI-600

** Not available on battery versions



Remote Sensor
(OX and EC only)

H₂

H₂ Specific Sensor / Transmitter

H₂ Specific

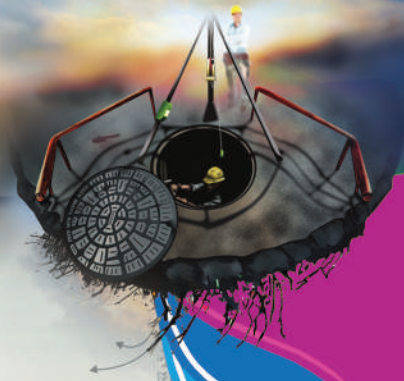
Gas monitoring that is specific to hydrogen without any false alarms is now available from RKI Instruments. A low range version is available which is highly sensitive with a range of 0-2,000 ppm. This is 20 times more sensitive than standard LEL detectors. The technology is based on a proprietary hydrogen specific solid state sensor. The second hydrogen specific sensor is for LEL range. A molecular sieve filter is used to make the sensors respond only to hydrogen molecules. False alarms from interfering gases are eliminated. Ideal for semiconductor fab monitoring and fuel cell applications. Production interruptions are minimized by eliminating false alarms from isopropyl alcohol (IPA) or other compounds. LEL is available with Direct Connect, S2 and M2A, 0-2000 ppm available in S2 Series.

IPA historically has caused problems with conventional hydrogen sensors when they mistakenly indicate the presence of hydrogen.

FEATURES

- Explosion proof housing
- H₂ specific solid state sensor (0-2000 PPM)
- Catalytic H₂ specific sensor (0-100 % LEL)
- Eliminates false alarms from IPA and other compounds
- Molecular sieve filter
- 4-20 mA transmitter, 24VDC, or direct connect
- Poison resistant
- Optional stainless steel enclosure





Fixed Systems Detector Assemblies

Sample Draw Sensor / Transmitter

LEL, O₂, H₂S, CO, CO₂

35-3001



The 35-3001 series is a compact sample draw detector assembly with a built-in pump that accepts a 24VDC input. This unit features a NEMA 4X enclosure making it dust, water and corrosion resistant. It also features a flowmeter with adjustable flow and a low flow alarm which warns of any obstructions or restrictions in the flow system. The 35-3001 is also available in some dual sensor configurations.

The 35-3001 is capable of single person calibrations and remote sampling at up to 5,000 ft. from a controller, and interfacing to any RKI or third party control system (utilizing a 4-20 mA feedback signal).

FEATURES

- NEMA 4X enclosure
- Long life pump
- Low flow indication
- Flowmeter and LED's for operational status
- Operates on 24VDC input
- Multi gas versions available with sensors in one enclosure

Digester Process Gas Monitoring

High Range H₂S,
CH₄ Vol, O₂, CO₂

Digester Gas Monitor



Gas from waste digesters contains high levels of methane, CO₂, and H₂S, with little to no oxygen present. The Digester gas monitor checks for all these gases on a cyclic basis. A powerful air aspirator draws a sample from up to 100 feet away. Since digester gas contains high humidity and high H₂S, both of which can cause damage to sampling systems, the RKI Digester Gas Monitor is designed to handle these with no damage to the sampling system or sensors. The sample is passed through a series of particles, dust, and moisture stopping filters, and these filters are automatically purged with fresh air at the end of each cycle.

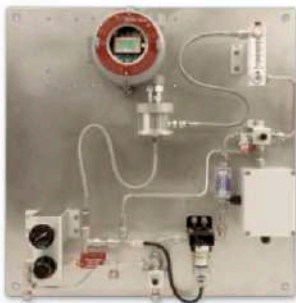
FEATURES

- Corrosion resistant design
 - Housing designed for extreme environments
 - Internal construction for extreme samples
 - Flow system designed to handle corrosive wet samples
- Sample system designed to handle high humidity
- Accurately measures gases with high levels of H₂S present
- 100 ft. sample range
- Up to 4 sensors:
 - CH₄ 0-100% volume
 - CO₂ 0-50% volume
 - O₂ 0-25% volume
 - H₂S 0-1000 PPM (0-3000 or 0-5000 optional)
- Suitable for indoor / outdoor installations
- NEMA 4X enclosure

Harsh Environment Aspirator Panel

H₂S, CO, O₂, CO₂, H₂, LEL

Aspirator Panel



Single or dual sensor system is designed to monitor gas atmospheres from extreme conditions with either temperature or pressure challenges. A powerful air aspirator can pull a sample from up to 100 feet away. The filtered and conditioned sample gas is then passed across one or two different detectors. Each detector shares a common calibration and compressed air inlet for aspirated flow. This system is fault tolerant removing the need for expensive downtimes and maintenance. The sample is diluted with air after the gas sensor then returned to a common exhaust reducing the danger of potential hazardous gases entering a safe work space.

System integrity is maintained at all times using a flow fail monitoring device which provides an normally open contact that activates if the sample line becomes blocked or damaged or if the air supply is removed or interrupted.

FEATURES

- Long life air aspirator (no moving parts)
- Extreme sample temperatures
- Indoor / outdoor location options
- Corrosion resistant construction for extreme environments / samples
- Uses proven RKI technology
- Modular design easy to maintain
- Self draining moisture trap
- Back flush for sample line
- NEMA 4X enclosure options

Safety



CH₄, HC, O₂, H₂S, CO,
CO₂, NH₃, SO₂

Fixed Systems Detector Assemblies

Explosion Proof Multi Sensor Head

Waste Water Gas Monitoring

This unique tri-sensor head can be used either indoors or outdoors. The flame arrestors for the explosion-proof versions utilize a patented coating which make them water repellent. Also, splash guards are available for use in very wet environments. The tri and quad sensor head is designed to specifically interface with the RKI Beacon 410A controller.

The direct connect series sensors are available for LEL (IR or catalytic), toxics, O₂, H₂S, CO, or CO₂. All sensors are explosion-proof with flame arrestors, and suitable for use in hazardous locations. The enclosure is corrosion resistant NEMA 4X stainless steel.

Recommended for water and wastewater applications including wet wells, dry wells, bar screens, lift stations, digesters, thickeners, pump stations, and confined spaces.

FEATURES

- 2-4 Sensors, 1 explosion proof housing
- Infrared sensors available for combustible or CO₂
- Interfaces with Beacon 410A controller
- Available for combinations of LEL (CH₄ or HC), O₂, CO, H₂S, CO₂, and toxics
- Water repellent patented sensor coating
- Long life sensors (2 + years typical)
- CSA approved NEMA 4X stainless steel enclosure



Semiconductor Gases

FP-300, 301, and 330

Paper Tape Toxic Gas Detector

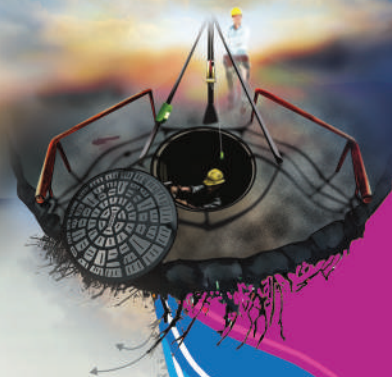


RKI's paper tape monitors utilize highly sensitive colorimetric tapes to achieve interference free detection at low PPB and PPM levels of a wide variety of gases. Each model is equipped with easily replaceable tapes that are specific to the gas being monitored. Each model has a digital display showing the type of gas and concentration in either PPM or PPB, and also displays remaining tape time as well as an end of tape alarm.

FEATURES

- PPB detection for many gases
- PPB or PPM digital display
- Easily transportable
- 115 VAC powered

Gas Name	Gas Formula	Range	FP-300	FP-330	FP-301
Ammonia	NH ₃	0 - 4ppm	•		
Arsine	AsH ₃	0 - 150ppb 0 - 15ppb	•		•
Boron Trifluoride	BF ₃	0 - 3ppm	•		
Chlorine	Cl ₂	0 - 1.5ppm 0 - 0.8ppm	•		
Diborane	B ₂ H ₆	0 - 300ppb	•		
Hydrogen Bromide	HBr	0 - 2ppm	•		
Hydrogen Chloride	HCl	0 - 1ppm 0 - 8ppm	•		
Hydrogen Fluoride	HF	0 - 3ppm	•		
Hydrogen Selenide	H ₂ Se	0 - 200ppb			•
Hydrogen Sulfide	H ₂ S	0 - 100ppb 0 - 10ppm	•		
Octafluorocyclopentene	C ₅ F ₈	0 - 5ppm	•		
Perfluorobutadiene	C ₄ F ₆	0 - 5ppm	•		
Phosgene	COCl ₂	0 - 300ppb	•		
Phosphine	PH ₃	0 - 500ppb 0 - 900ppb	•		
Silane	SiH ₄	0 - 15ppm	•		
Formaldehyde	HCHO	0 - 0.5ppm 0 - 1ppm 0 - 5ppm			•



Fixed Systems Detector Assemblies

Single Point Stand Alone Monitor

A perfect solution for hydrogen detection in battery rooms, methane detection in basements, or in buildings near landfills. The PS 2 also detects a variety of solvent vapors in general industry and is a multipurpose gas monitor utilizing a metal oxide sensor (MOS) for long lasting and low maintenance detection at low LEL level of many gases or vapors. The PS 2 has two alarm levels for increasing gas or vapor levels. This stand alone unit is housed in a durable plastic enclosure with flanges provided for wall mounting and is designed with easy access wiring hubs on the bottom of the unit. The front of the PS 2 contains three lights; Pilot, Alarm 1, and Alarm 2. An internal audible alarm (85 db) signals a gas alarm condition. The sensor is provided on the end of a 30' extension cable as standard and the 115 VAC version is equipped with a power cord, for easy installation.

FEATURES

- LEL detection ranges available for many gases
- 2 alarm levels (typically 10% LEL and 30% LEL)
- Stand alone system
- Input voltages: 115 VAC standard, 24 VDC or 48 VDC (optional)
- Audible and visual alarms
- Compact design
- Simple installation
- AC version equipped with power cord
- Relay contacts rated 12A @ 115 VAC
- Low maintenance



PS 2

PPM or LEL H2 and Solvent Vapors

LEL / H2S Detection for Drill Rigs

LEL or H2S

Rig Monitor



Rig monitors are specifically designed for detection of LEL / H2S around drilling rigs. All units include our long-life plug in electrochemical H2S sensor, range 0 - 100 ppm or our catalytic sensor range 0 - 100% LEL. All cable connections are protected by rugged strain relief cord grips, and sensors are mounted in an explosion proof enclosure that includes a convenient mounting bracket. Also included is a powerful horn / strobe mounted directly to the M2A or Beacon controller. The unit is powered by 12 VDC and comes with battery clamps on a 50' Cable.

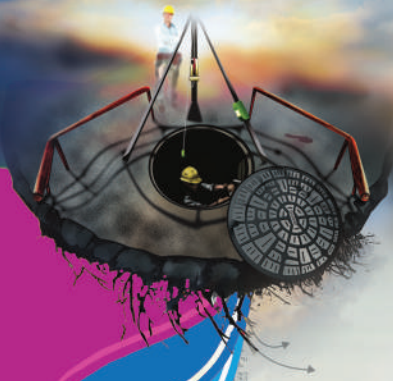
FEATURES

- Pre-wired for easy installation
- 12 VDC powered with battery clamps
- Sensors wired on 25' cables
- Powerful horn / strobe
- Ideal for use at oil and gas drilling sites
- LEL versions available
- 2-4 channel versions available

Sensor Specification

	H2S	LEL
Sensor	Electrochemical	Catalytic
Measuring Ranges	0 - 100 ppm H2S	100% LEL
Resolution	1 ppm	1 LEL
Lower Detectable Limit (LDL)	2% of full scale	
Response Time (T-90)	35 Seconds or less	
Life Expectancy	2 to 3 years with normal service	
Accuracy	± 5% of reading or ± 2 ppm H2S, ± 2% LEL (whichever is greater)	
Weather Resistant	Patented water repellent sensor coating	

Safety



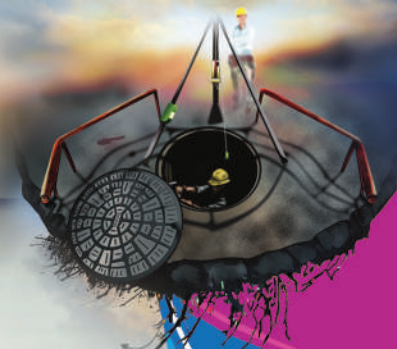
Safety

Calibration Kits

Fixed Systems Detector Assemblies

Calibration Equipment

	Diffusion Instruments	Sample Draw Instruments
Small Kit	<p>Fixed flow regulators 2 Cylinder Case</p> <p>34AL 34L Tubing GX-2009 Cal Cup 81-1117RK Cal Cup</p>	<p>Demand flow regulators 2 Cylinder Case</p> <p>34AL 34L Tubing</p>
Large Kit	<p>Fixed flow regulator 3 cylinder case 2 cylinder case</p> <p>58AL 103L Tubing GX-2009 Cal Cup 81-1117RK Cal Cup</p>	<p>Demand flow regulator 3 cylinder case 2 cylinder case</p> <p>58AL 103L Tubing</p>
Portable Models	GX-3R, GX-3R Pro, GX-2009, 03 Series, GasWatch 3, SC-01	GX-6000, GX-2012, Gas Tracer, Eagle 2, Eagle, RX-8000, RX-516, RX-517
Fixed System Models	Direct Connect Sensors, S2, M2A, GD-A80/GD-A80V, GD-K88Ai, PS2, M Series, OX-600, CO-600	GD-70D, 35-3001 Series

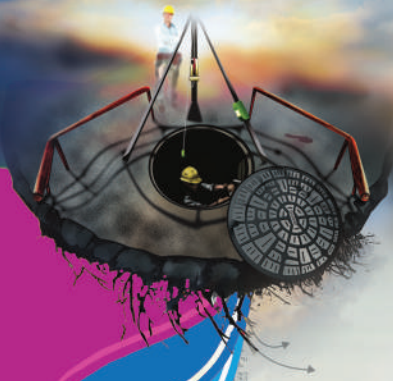


Detectable Gases

Measurable Gases	Symbol	TLV/TWA	Range	Diffusion Detector	Sample Draw	Portable
Acetic Acid	CH ₃ COOH	1.5 PPM	30 PPM	—	GD-70D	—
Ammonia	NH ₃	25 PPM	75 PPM/400 PPM	GD-K88AI-NH ₃ / DC / S2 / M2A	GD-70D	GX-6000 / EAGLE / EAGLE 2 / SC-01 / SP-220
Ammonia	NH ₃	25 PPM	1 PPM / 4 PPM	—	FP-311 / FP-310	—
Arsine	AsH ₃	0.05 PPM	0.2 / 1.5 PPM	DC / S2 / M2A / GD-K88AI-AsH ₃	GD-70D	EAGLE / EAGLE 2 / SC-01 / SP-220
Benzene	C ₆ H ₆	0.5 PPM	various PPM	SD-1GH	GD-70D	EAGLE / EAGLE 2 / GX-6000
Boron Trichloride	BCl ₃	HCl C 5 PPM	15 PPM	GD-K88AI-BCl ₃	GD-70D	EAGLE
Boron Trifluoride	BF ₃	HF C 3 PPM	9 PPM	—	GD-70D	EAGLE
Bromine	Br ₂	0.1 PPM	1 PPM	GD-K88AI-Br ₂	GD-70D	EAGLE
Butane	C ₄ H ₁₀	LEL = 1.9%	100% LEL	DC / S2 / M2A / SD-1GP / PS2	35-3001 / GD-D58GH / GD-70D	GX-3R / GX-3R Pro / GP-03 / EAGLE / EAGLE 2 / GX-6000 / GX-2012 / Gas Tracer / GX-2009 / RX-8000
Carbon Dioxide	CO ₂	5,000 PPM	2,000 PPM	RI-600	—	—
Carbon Dioxide	CO ₂	5,000 PPM	5,000 PPM	RI-600 / DC / S2 / M2A	35-3001	EAGLE / EAGLE 2
Carbon Dioxide	CO ₂	5,000 PPM	10,000 PPM	RI-600	—	EAGLE / EAGLE 2 / GX-6000
Carbon Dioxide	CO ₂	5,000 PPM	5%, 20,50,60,100%	RI-600 / DC / S2 / M2A	35-3001	EAGLE / EAGLE 2 / GX-6000
Carbon Monoxide	CO	25 PPM	30 / 75 / 150 PPM	GD-K88AI-CO	GD-70D	SC-01 / SP-220
Carbon Monoxide	CO	25 PPM	300 / 500 PPM	EC-600 / DC / S2 / M2A / M Series	35-3001-CO	GX-3R / GX-3R Pro / CO-03 / EAGLE / EAGLE 2 / GX-6000 / GX-2012 / Gas Tracer / GX-2009
Chlorine	Cl ₂	0.5 PPM	3 PPM / 10 PPM	GD-K88AI-Cl ₂ / DC / S2 / M2A	GD-70D	EAGLE / EAGLE 2 / GX-6000 / SC-01
Chlorine Trifluoride	ClF ₃	0.1 PPM	0.6 PPM	—	GD-70D	EAGLE
Combustibles LEL	LEL	—	100% LEL	DC / S2 / M2A / SD-1GP / PS2	35-3001 / GD-D58 / GD-70D	GX-3R / GX-3R Pro / GP-03 / EAGLE / EAGLE 2 / GX-6000 / GX-2012 / Gas Tracer / GX-2009
Combustibles PPM	PPM	—	various PPM	SD-1GH	GD-70D, GD-D58GH	EAGLE / EAGLE 2
Diborane	B ₂ H ₆	0.1 PPM	0.3 PPM	GD-K88AI-B ₂ H ₆	GD-70D	EAGLE / SP-220
Dimethylamine	DMA	5 PPM	15 PPM	GD-K88AI	GD-70D	EAGLE
Dichlorosilane	DCS	HCl 5 PPM	15 PPM	GD-K88AI-DCS	GD-70D	EAGLE
Disilane	Si ₂ H ₆	5 PPM	15 PPM	GD-K88AI-Si ₂ H ₆	GD-70D	EAGLE
Fluorine	F ₂	1 PPM	3 PPM	—	GD-70D	EAGLE
Formaldehyde	HCHO	C 0.3 PPM	1 / 500 PPM	—	FP-330	FP-31 / SP-220
Germane	GeH ₄	0.2 PPM	0.2 / 0.8 PPM	—	GD-70D	SP-220
Halocarbons	HCFC	Various	0 - 5,000 (typ)	—	RI-257, GD-70D	—
Hexane	C ₆ H ₁₄	—	2,000 PPM	SD-1GH	GD-70D, GD-D58GH	EAGLE / EAGLE 2 / GX-6000
Hexane	C ₆ H ₁₄	LEL = 1.1%	100% LEL	S2 / SD-1GP / DC / M2A / PS2	35-3001 / GD-D58	GX-3R / GX-3R Pro / GP-03 / EAGLE / EAGLE 2 / GX-6000 / GX-2012 / Gas Tracer / GX-2009
Hydrazine	N ₂ H ₄	0.1 PPM	4 PPM	—	FP-310	—
Hydrocarbon LEL	LEL	—	100% LEL	M2A / S2 / SD-1GP / DC / PS2	35-3001-LEL / GD-D58 / GD-70D	GX-3R / GX-3R Pro / GP-03 / EAGLE / EAGLE 2 / GX-6000 / RX-8000 / GX-2012 / Gas Tracer / GX-2009
Hydrocarbon PPM	PPM	—	various PPM	SD-1GH	GD-70D / GD-D58GH	EAGLE / EAGLE 2 / GX-6000
Hydrogen LEL	H ₂	LEL = 4%	100% LEL	DC / S2 / M2A / SD-1GP / H ₂ Specific / PS2	GD-70D / GD-D58	GX-3R / GX-3R Pro / GP-03 / EAGLE / EAGLE 2 / GX-6000 / GX-2012 Gas Tracer / GX-2009
Hydrogen PPM	H ₂	—	10 / 2,000 PPM	H ₂ Specific / SD-1GH	GD-70D / GD-D58GH	EAGLE / EAGLE 2 / SP-220
Hydrogen Bromide	HBr	C 3 PPM	9 / 10 PPM	GD-K88AI-HBr	GD-70D	EAGLE / SP-220
Hydrogen Chloride	HCl	C 5 PPM	10 / 15 PPM	GD-K88AI-HCl	GD-70D	EAGLE / SP-220
Hydrogen Cyanide	HCN	STEL C 4.7 PPM	15 / 30 PPM	DC / S2 / M2A / GD-K88AI-HCN	GD-70D	EAGLE / EAGLE 2 (0-15 ppm) / GX-6000
Hydrogen Fluoride	HF	C 3 PPM	9 PPM	—	GD-70D	EAGLE
Hydrogen Iodide	HI	—	5 PPM	—	GD-70D	EAGLE
Hydrogen Sulfide	H ₂ S	0.1 / 1 PPM	1 / 30 PPM	GD-K88AI-H ₂ S	GD-70D	EAGLE / SC-01
Hydrogen Sulfide	H ₂ S	1 PPM	100 PPM	DC / S2 / M2A / M-Series	35-3001-H ₂ S	GX-3R / GX-3R Pro / HS-03 / EAGLE / EAGLE 2 / GX-6000 / GX-2012 / GX-2009
Iodine	I ₂	STEL C 0.1 PPM	1 PPM	SD-1GP	GD-70D	EAGLE
Isobutane	C ₄ H ₁₀	LEL = 1.8%	100% LEL	DC / S2 / M2A / GD-A80 / PS2	35-3001 / GD-D58 / GD-70D	GX-3R / GX-3R Pro / GP-03 / EAGLE / EAGLE 2 / GX-6000 / GX-2012 / Gas Tracer / GX-2009 / RX-8000
Isopropyl Alcohol (IPA)	CH ₃ CHOHCH ₃	400 PPM	10 / 2,000 PPM	SD-1GH	GD-70D / GD-D58GH	EAGLE / EAGLE 2 / GX-6000 / SP-220
Methane	CH ₄	LEL = 5%	100% LEL	DC / S2 / M2A / SD-1GP / PS2	GD-70D / GD-D58	GX-3R / GX-3R Pro / GP-03 / EAGLE / EAGLE 2 / GX-6000 / GX-2012 / Gas Tracer / GX-2009 / RX-8000
Nitric Acid	HNO ₃	2 PPM	20 PPM	—	GD-70D	EAGLE
Nitric Oxide	NO	25 PPM	100 PPM	GD-K88AI-NO	GD-70D	EAGLE
Nitrogen Dioxide	NO ₂	3 PPM	9 PPM / 15 PPM	GD-K88AI-NO ₂	GD-70D	EAGLE / GX-6000
Nitrogen Trioxide	N ₂ O ₄	NO ₂ 3 PPM	15 PPM	—	GD-70D	EAGLE
Nitrogen Trifluoride	NF ₃	10 PPM	30 PPM	—	GD-70D	—
Octafluorocyclopentene	C ₅ F ₈	—	5 PPM	—	FP-300AGZS	—
Oxygen	O ₂	—	25% / 40%	OX-600 / DC / S2 / M2A	35-3001-OXY / GD-70D	GX-3R / GX-3R Pro / OX-03 / EAGLE / EAGLE 2 / GX-6000 / GX-2012 / Gas Tracer / GX-2009 / RX-8000
Ozone	O ₃	0.1 PPM	0.6 PPM	GD-K88AI-O ₃	GD-70D	EAGLE
Pentane	C ₅ H ₁₂	LEL = 1.5%	100% LEL	DC / S2 / M2A / SD-1GP / PS2	35-3001 / GD-D58	GX-3R / GX-3R Pro / GP-03 / EAGLE / EAGLE 2 / GX-6000 / GX-2012 / Gas Tracer / GX-2009
Perfluorobutadiene	C ₄ F ₆	—	5 PPM	—	FP-300AGZS	—
Phosphine	PH ₃	0.3 PPM	1 / 2 PPM	GD-K88AI-PH ₃ / DC / S2 / M2A	GD-70D	EAGLE / EAGLE 2 / SC-01 / SP-220
Propane	C ₃ H ₈	LEL = 2.1%	10 PPM / 100% LEL	DC / S2 / M2A / SD-1GP / PS2	35-3001 / GD-D58 / GD-70D	GX-3R / GX-3R Pro / GP-03 / EAGLE / EAGLE 2 / GX-6000 / GX-2012 / Gas Tracer / GX-2009 / SP-220
Silane	SiH ₄	5 PPM	0.5 / 15 PPM	GD-K88AI-SiH ₄	GD-70D	EAGLE / SP-220
Silicon Tetrachloride	SiCl ₄	HCl C 5 PPM	15 PPM	GD-K88AI-SiCl ₄	GD-70D	EAGLE
Silicon Tetrafluoride	SiF ₄	HF C 3 PPM	9 PPM	—	GD-70D	EAGLE
Sulfur Dioxide	SO ₂	25 PPM	1/6/10/15/30 PPM	DC / S2 / M2A / GD-K88AI-SO ₂	GD-70D	EAGLE / EAGLE 2 / GX-6000 / SC-01 / SP-220
Sulfur Tetrafluoride	SF ₄	HF C 3 PPM	9 PPM	—	GD-70D	EAGLE
Tetraethyl Orthosilicate	TEOS	10 PPM	15 PPM	—	GD-70D	—
Trichlorosilane	TCS	HCl C 5 PPM	15 PPM	—	GD-70D	EAGLE
Trimethoxy Phosphate	TMP	2 PPM	15 PPM	—	GD-70D	—
Trimethoxyboron	TMB	—	500 PPM	—	GD-70D	—
Toluene	C ₆ H ₅ CH ₃	20 PPM	various PPM	SD-1GH	GD-70D / GD-D58GH	EAGLE / EAGLE 2 / GX-6000
Tungsten Hexafluoride	WF ₆	HF C 3 PPM	9 PPM	—	GD-70D	EAGLE
1,1,1-Trichloroethane	C ₂ H ₃ Cl ₃	350 PPM	0 - 2,000 PPM	SD-1GH	GD-D58GH	—
Volatile Organic Compound	VOCs	—	0-50 / 50-6000 PPM	SD-1GH	GD-D58GH	EAGLE 2 / GX-6000

*Other gases and ranges also available. Please call RKI Instruments at (800) 754-5165. DC = Direct Connect Sensors.

Safety



Portable Solutions

Single Gas



GP-03 OX-03 HS-03 CO-03

Multi Gas



GX-3R GX-3R Pro GX-2009 GX-2012 GX-6000 Eagle 2 Eagle

Fixed Solutions

Controllers



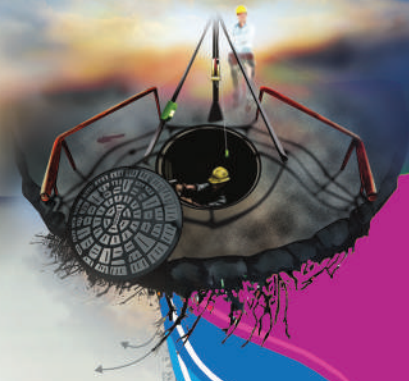
Beacon 110 Beacon 200 Beacon 410A Beacon 800

Detector Heads

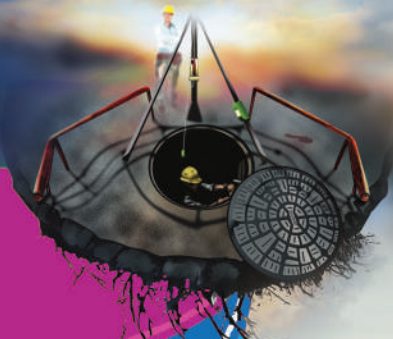


Direct Connect S2 M2A GD-70D EC-600 OX-600

200213/5000



Safety



Safety

Ventilators

Axial



Model:	1320	1420
Power:	Electric - 1/6 HP 120 VAC, 1.4 Amps	Electric - 1/4 HP 12 VDC, 15 Amps
Certifications:	CSA, CEESI	CEESI
Dimensions:	12"L x 8.5"W x 12.5"H	12"L x 8.5"W x 12.5"H
Weight:	15 lbs.	17 lbs.
Free Air (certified):	809 cfm	719 cfm
w/ one 90° bend:	617 cfm	502 cfm
w/ two 90° bends:	505 cfm	425 cfm
Housing:	Formed Steel	Formed Steel
Static Pressure:	1.30" W.C.	

Recommended Accessories
FlexPac 15/25



Model:	1325P	1400P
Power:	Electric - 1/3 HP, 120 VAC, 3 Amps	Electric - 1/4 HP 12 VDC, 15 Amps
Certifications:	CSA, CEESI	CEESI
Dimensions:	18"L x 14"W x 15"H	18"L x 14" W x 15"H
Weight:	17 lbs.	17 lbs.
Free Air (certified):	921 cfm	814 cfm
w/ one 90° bend:	575 cfm	478 cfm
w/ two 90° bends:	546 cfm	479 cfm
Housing:	High Density Polyethylene	High Density Polyethylene
Static Pressure:	1.87" W.C.	1.2" W.C.

Recommended Accessories
AirPac 15/25



Model:	1325D	1400D
Power:	Electric - 1/3 HP, 120 VAC, 3 Amps	Electric - 1/4 HP 12 VDC, 15 Amps
Certifications:	CSA, CEESI	CEESI
Dimensions:	14.5"L x 13"W x 14.5"H	14.5"L x 13"W x 14.5"H
Weight:	19.5 lbs.	16.5 lbs.
Free Air (certified):	1075 cfm	922 cfm
w/ one 90° bend:	668 cfm	541 cfm
w/ two 90° bends:	585 cfm	518 cfm
Housing:	Formed Steel	Formed Steel
Static Pressure:	2.09" W.C.	1.46" W.C.

Recommended Accessories
3215HRT
3225HRT

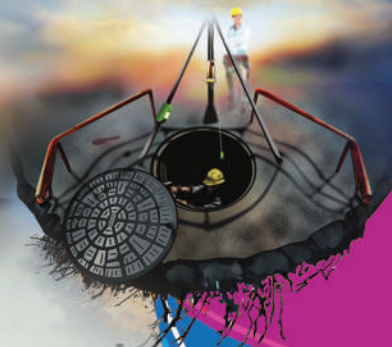


Model:	1375D & 1385D	1475D & 1485D
Power:	Electric - 1/3 HP, 120 VAC, 3 Amps	Electric - 1/4 HP, 12 VDC, 15 Amps
Certifications:	CSA, CEESI,	CEESI
Dimensions:	37"L x 13"W x 14.5"H	37"L x 13"W x 14.5"H
Weight:	40 lbs.	40 lbs.
Certified Air Flow:	(15' hose) / (25' hose)	(15' hose) / (25' hose)
w/ one 90° bend:	668 cfm / 588 cfm	541 cfm / 492 cfm
w/ two 90° bends:	585 cfm / 553 cfm	518 cfm / 490 cfm
Static Pressure:	2.09" W.C.	1.46" W.C.

Air flow certified by CEESI with a 8" x 15' & 25' collapsable duct.

Model:	1375P & 1385P	1475P & 1485P
Power:	Electric - 1/3 HP, 120 VAC, 3 Amps	Electric - 1/4 HP, 12 VDC, 15 Amps
Certifications:	CSA, CEESI,	CEESI
Dimensions:	37"L x 13"W x 14.5"H	37"L x 13"W x 14.5"H
Weight:	40 lbs.	40 lbs.
Certified Air Flow:	(15' hose) / (25' hose)	(15' hose) / (25' hose)
w/ one 90° bend:	668 cfm / 588 cfm	541 cfm / 492 cfm
w/ two 90° bends:	585 cfm / 553 cfm	518 cfm / 490 cfm
Static Pressure:	1.87" W.C.	1.20" W.C.

Air flow certified by CEESI with a 8" x 15' & 25' collapsable duct.



Ventilators

Centrifugal Ventilators

ELECTRIC POWERED



Model	1000
Power:	Electric - 1/3 HP 1725 RPM, 60 Hz 120V AC, 6.2 Amps
Certifications:	CSA, CEESI
Dimensions:	15.25"L x 14.63"W x 15"H
Weight:	35 lbs.
Free Air (certified):	1068 cfm
w/ one 90° bend:	924 cfm
w/ two 90° bends:	807 cfm
Housing:	Formed Steel
Static Pressure:	2.27" W.C.

The 1000 & 1200 are spark resistant

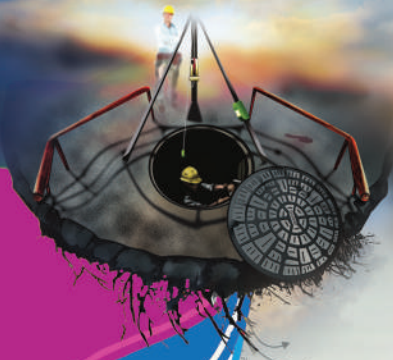


Model	1200 (2-speed ventilator)	
	Low	High
Power:	Electric - 1/9 HP 1140 RPM, 60 Hz 120V AC, 2.8 Amps	Electric - 1/3 HP 1725 RPM, 60 Hz 120V AC, 6.4 Amps
Certifications:	CEESI	
Dimensions:	15.5"L x 15.5"W x 15"H	
Weight:	35 lbs.	
Free Air (certified):	774 cfm	1171 cfm
w/ one 90° bend:	581 cfm	853 cfm
w/ two 90° bends:	489 cfm	761 cfm
Housing:	Formed Steel	Formed Steel
Static Pressure:	0.97" W.C.	2.27" W.C.



Model	1240 (2-speed ventilator)	
	Low	High
Power:	Electric - 1/3 HP 1140 RPM, 60 Hz 120V AC, 7 Amps	Electric - 1 HP 1725 RPM, 60 Hz 120V AC, 12 Amps
Certifications:	CSA, CEESI	
Dimensions:	18.5"L x 18.5"W x 17.5"H	
Weight:	54 lbs.	
Free Air (certified):	790 cfm	1193 cfm
w/ one 90° bend:	526 cfm	810 cfm
w/ two 90° bends:	506 cfm	805 cfm
Housing:	Formed Steel	Formed Steel
Static Pressure:	0.82" W.C.	1.93" W.C.

*All models have the ability to extract air with a built in suction adaptor

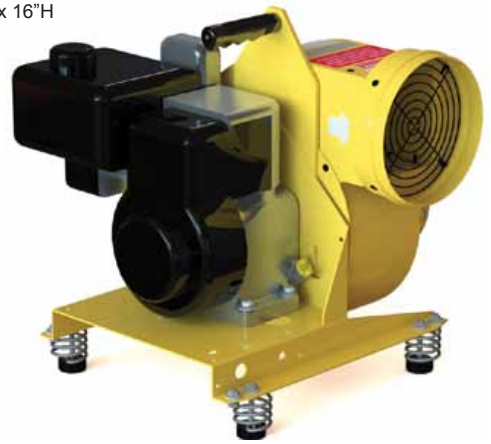


Centrifugal & Hazardous Location

Ventilators

GASOLINE POWERED

Model	1450	1453
	(Briggs & Stratton)	(Honda)
Power:	Gasoline - 3.5 HP 3600 RPM	Gasoline - 4 HP 3600 RPM
Certifications:	CEESI	CEESI
Dimensions:	18.5"L x 15.25"W x 16"H	18.5"L x 15.25"W x 16"H
Weight:	55 lbs.	55 lbs.
Free Air (certified):	1526 cfm	1526 cfm
w/ one 90° bend:	1360 cfm	1360 cfm
w/ two 90° bends:	1255 cfm	1255 cfm
Housing:	Formed Steel	Formed Steel
Static Pressure:	5.71" W.C.	5.71" W.C.



- Certified up to 200' hose (900 cfm)
- Models available in diesel or compressed air, consult factory for details

*All air flows certified by CEESI using a 8" x 15' collapsable duct.

EXPLOSION PROOF

Model	1000E
Power: Single Speed	Electric - 1/3 HP 1725 RPM, 60 Hz 120V AC, 6.2 Amps
Certifications:	CEESI
Dimensions:	15"L x 21"W x 15"H
Weight:	45 lbs.
Free Air (certified):	1068 cfm
w/ one 90° bend:	924 cfm
w/ two 90° bends:	807 cfm

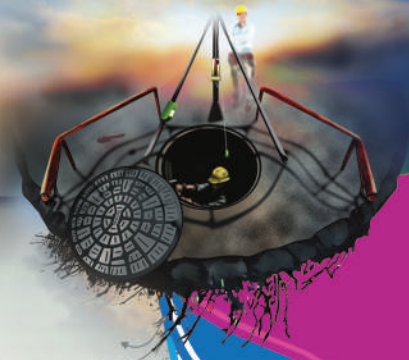
Model	1240E
Power:	Electric - 3/4 HP 1725 RPM, 60 Hz 120V AC, 11.4 Amps
Certifications:	CEESI
Dimensions:	17"L x 17"W x 17"H
Weight:	55 lbs.
Free Air (certified):	1277 cfm
w/ one 90° bend:	1024 cfm
w/ two 90° bends:	880 cfm



Plugs are not provided with these products (Please review "Hazardous Location Basics" on page 16)



*All models have the ability to extract air with a built in suction adaptor



Ventilation Accessories

All hoses are Fire Retardant



"AirPac" Series Hose & Canister

The AIRPAC series is a molded polyethylene canister and hose combination, which attaches to the 1325P & 1400P ventilators. The AIRPAC15 includes a 15 ft hose. The AIRPAC25 includes a 25 ft hose. Add the letter "S" to the end of the model number to include the "Spacemaker" hose.



Ventilator Hoses

Three styles of high quality 8" dia. ventilation hose:
Hoses have cuff & strap at one end. Made of Polyester with neoprene coating (HRT) Heat Reaction (No Heat)

Model # Description

8" Hoses Glued

2015HRT	Standard Wt., 15' L
2025HRT	Standard Wt., 25' L

8" Hoses Sewn

2015HD	Heavy Duty Wt., 15' L
2025HD	Heavy Duty Wt., 25' L
2006-N	Insulated, 6' L
2015-N	Insulated, 15' L
2025-N	Insulated, 25' L

12" Hoses Sewn

2120-N	Insulated, 20' L
---------------	------------------

Conductive Ventilator Hose

They are supplied with cuff and attachment hardware and lug for grounding.

Model # Diameter Length

2015EX	8"	15'
2025EX	8"	25'
2050EX	8"	50'



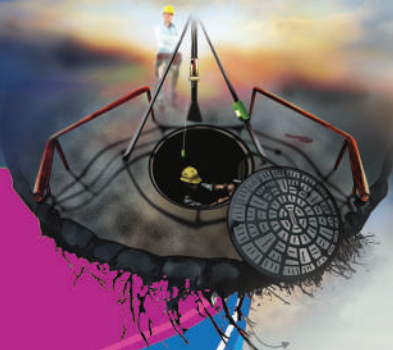
Hose to Hose Connector

Our Aluminum Hose to Hose Adapter, is easily installed to securely combine lengths of 8" or 12" diameter ventilator hoses.

Model # Diameter Length

2101	8"	8"
2112	12"	12"





Ventilation Accessories

Suction Adaptor

Model 3003P Suction adapter attaches to the intake side of the 1325 & 1400 series ventilators, so that you may attach an 8" diameter hose to provide suction.

Used for smoke/dust/fume removal only



Hose Storage

Model 3015P - Constructed of a durable, weather resistant, high-impact polyethylene plastic, and will hold HRT model hoses only.



"Pel Can" Hose Storage

Steel construction, and coated with a weather resistant, safety yellow powder coat finish.

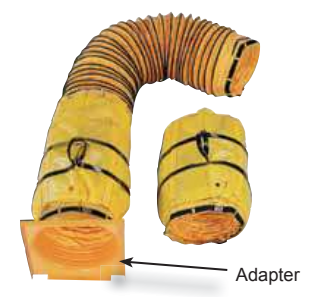
Model	Size	Holds
3025A	12" X 36"	15' & 20' HRT & 2015HD
3035A	12" X 47"	15' & 20' "N" Models & 2025HD (Will also hold 2 - 25' HRT hoses)
3135A	16" X 47"	2120N Hose



Super Axial Spiral Ducts

Super Axial ducts are high quality hoses made with heavy duty wear strips and two-ply construction. Ideal for moving large quantities of air into hard to reach places. Available with an adaptor as shown (AD). Extension pieces also available without adaptor (RC2). Each duct comes complete with it's own storage bag.

Model	Diameter	Length
12X20AD	12"	20'
16X20AD	16"	20'
24X20AD	24"	20'
12X20RC2	12"	20'
16X20RC2	16"	20'
24X20RC2	24"	20'



"SpaceMaker" Series Ventilator Hoses

Our SpaceMaker hose allows unrestricted, continuous ventilation during entry and egress of a confined space. There are no accessory parts. Stores in a regular hose canister. Hoses are 8" (20 cm) in diameter and are available in 15' (4.57 m) (model SpaceMaker15) or 25' (7.62 m) (model SpaceMaker25) lengths. Note: not for use with heated air above 250°.





Manhole Tools

Aluminum Manhole Shields

43% lighter than steel! Lightweight 6061-T6 Aluminum. All models are reversible to fit both standard 27" & 30" manholes and are available in 8" or 12" heights. No clamps or sealing compounds needed - a water-tight seal is formed by inflating

the tube to 5-10 lbs of air or nitrogen. All sizes are stackable to maintain a dry opening in flooding conditions. Custom sizes are available upon request.



Model 2730-8A

Model #	Description	Weight
2730-8A	(27" or 30" dia.) 8" High	17 lbs
2730-12A	(27" or 30" dia.) 12" High	20 lbs
3336-12A	(33" or 36" dia.) 12" High	24 lbs
2750	Inner Tube Replacement	2 lbs

*Custom sizes available



Model 2730-12A



Shields are stackable for increased height

Manhole Guards

These lightweight, rugged steel or aluminum safety fences provide a rigid and highly visible traffic barrier around open manholes. They help eliminate wind hazards when used with a

manhole weather tent. Models 4000 & 4000AL clamp securely to the Pelsue manhole shield. Model 4000A is available with locking arms.



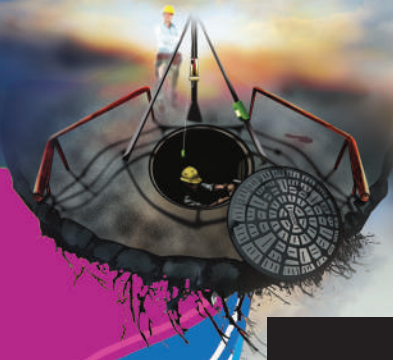
Model 4000/4000AL

For rescue and retrieval, view the LifeGuard system on pg 46



Model 4000A

Model #	Description (HxWxD)	Weight	Material
4000	42" x 31-3/8" x 32-3/8"	36 lbs.	Steel
4000A	42" x 32-1/4" x 32-1/4"	39 lbs.	Steel
4000AL	42" x 31-3/8" x 32-3/8"	22 lbs.	Aluminum



Manhole Tools



Pel Protector - for Manhole Shield



Model 2760, is a lightweight, molded fiberglass protector for manhole shields. It protects workers from falling objects and debris, without obstructing ventilation or emergency escapes. Works on either 27" (68.5 cm) or 30" (76 cm) sides of standard manhole shields. Lightweight and easily removable. Constructed with very strong fiberglass, can hold the weight of an average man, yet only weighs 9-1/2 lbs. (4.3 kg).



Manhole Lid Lifters

Model 2775 weighs only 12.5 lbs.(5.6 kg) and has a special handle to allow for a better grip. It is also designed to remove ice or dirt by using the built-in scraper.

This model features a heat treated hook that can lift manhole covers which are equipped with a hole. The hook locks in the handle when not in use.



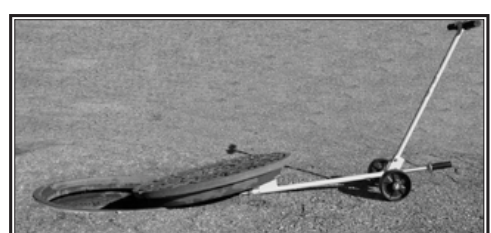
Model 2775

Model 2775C is identical to model 2775 but features a chain and hook.

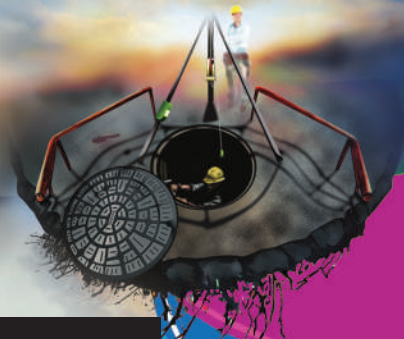


Model 2775C

Model M-1050 The Cover Shover, is an easy to use all in one tool for removing manhole covers. It features a built in slide hammer, for use when removing ice or asphalt. The unique design allows the user to remove the cover while keeping feet at a safe distance.



Model M-1050



Manhole Tools

Pel-Brite work lights are rugged and shock protected against dropping or falling, and are precision engineered from non-breakable, noncombustible materials. Designed for dependable service under extreme conditions. Cool to the touch, easy on the eyes, and color corrected. Available in 120 volt AC or 12 volt DC. Standard lamps are 8, 15, 20, 30, and 40 watt and come with either 25 or 50 foot cords.

120 Volt AC		
Model	Description	Weight
8-1525	15 Watt, 26.5" L, 25' cord	5 lbs
8-1550	15 Watt, 26.5" L, 50' cord	6 lbs
8-2025	20 Watt, 32" L, 25' cord	7 lbs
8-2050	20 Watt, 32" L, 50' cord	8 lbs
8-3025	30 Watt, 45" L, 25' cord	9 lbs
8-3050	30 Watt, 45" L, 50' cord	10 lbs
8-4025	40 Watt, 56" L, 25' cord	11 lbs
8-4050	40 Watt, 56" L, 50' cord	12 lbs

* Water resistant seal - can NOT be submerged in water

Pel-Bright Work Lights



Safety

HAZARDOUS LOCATION

PelBrite Lantern 8-6VEX

- EXPLOSION PROOF
- PIVOTING/ROTATING HEAD
- CUSTOM COLORS AVAILABLE
- FIVE LIGHT PATTERNS
- TRIGGER ACTIVATED LIGHTS
- CSA APPROVED
- CHARGING TYPE INTRINSICALLY SAFE



NEW



Hazardous Locations Lights

Pel-Brite work lights are rugged and shock protected against dropping or falling, and are precision engineered from non-breakable, noncombustible materials. Designed for dependable service under extreme conditions. Cool to the touch, easy on the eyes, and color corrected.

This safety light is designed for hazardous locations. Cord, ballast and lamp are FM and CSA approved for:

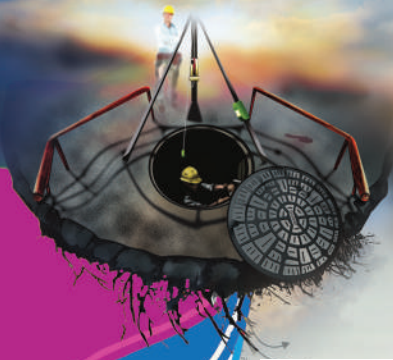
- Class I, DIV 1 & 2, Groups C & D,
- Class II, DIV 1 & 2 Groups E, F, & G,
- Class III, DIV 1 & 2

as defined by the Article 500 of the National Electrical Code. Pel Bright Work Lights are water tight to meet N.E.M.A. 4 Standard.

120 Volt AC		
Model	Description	Weight
26W25EX	26 Watt, 25' cord	11 lbs
26W50EX	26 Watt, 50' cord	15 lbs

Certified Standards





SIGN STANDS



Sign Stands

X-CELL 48 – Uses clamp-on brace:
CBTC48 – 48" brace
CBTC36 – 36" brace
■ Spring loaded

48 SS – Uses clamp-on brace:
CBTC48 – 48" brace
CBTC36 – 36" brace

MS 1000 – Uses brace that snaps into bottom of stand:
CBFF48 – 48" brace
CBFF36 – 36" brace

Aluminum Stands

TF 1230 – Uses clamp-on brace
CBTC48 – 48" brace
CBTC36 – 36" brace
■ Spring loaded

DL 1008 – Uses clamp-on brace
CBTC48 – 48" brace
CBTC36 – 36" brace

DL 1000A – Uses brace that snaps into bottom of stand:
CBFF48 – 48" brace
CBFF36 – 36" brace

Traffix Devices Sign Stands



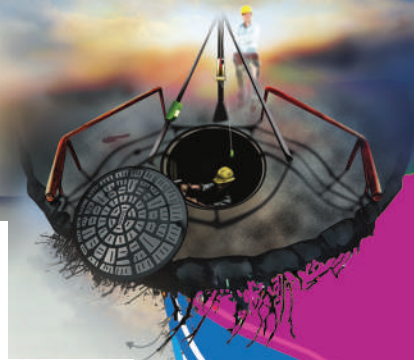
60060 – Big Buster
Uses clamp-on brace:
CBTC48 – 48" brace
CBTC36 – 36" brace
■ Spring loaded
60019 – Bracket for rigid signs–2 per sign

24018 – Little Buster
Uses clamp-on brace:
CBTC48 – 48" brace
CBTC36 – 36" brace
■ Spring loaded
24321 – Bracket for rigid signs–2 per sign

80018 – Econo Buster
Uses clamp-on brace:
CBTC48 – 48" brace
CBTC36 – 36" brace
24321 – Bracket for rigid signs–2 per sign

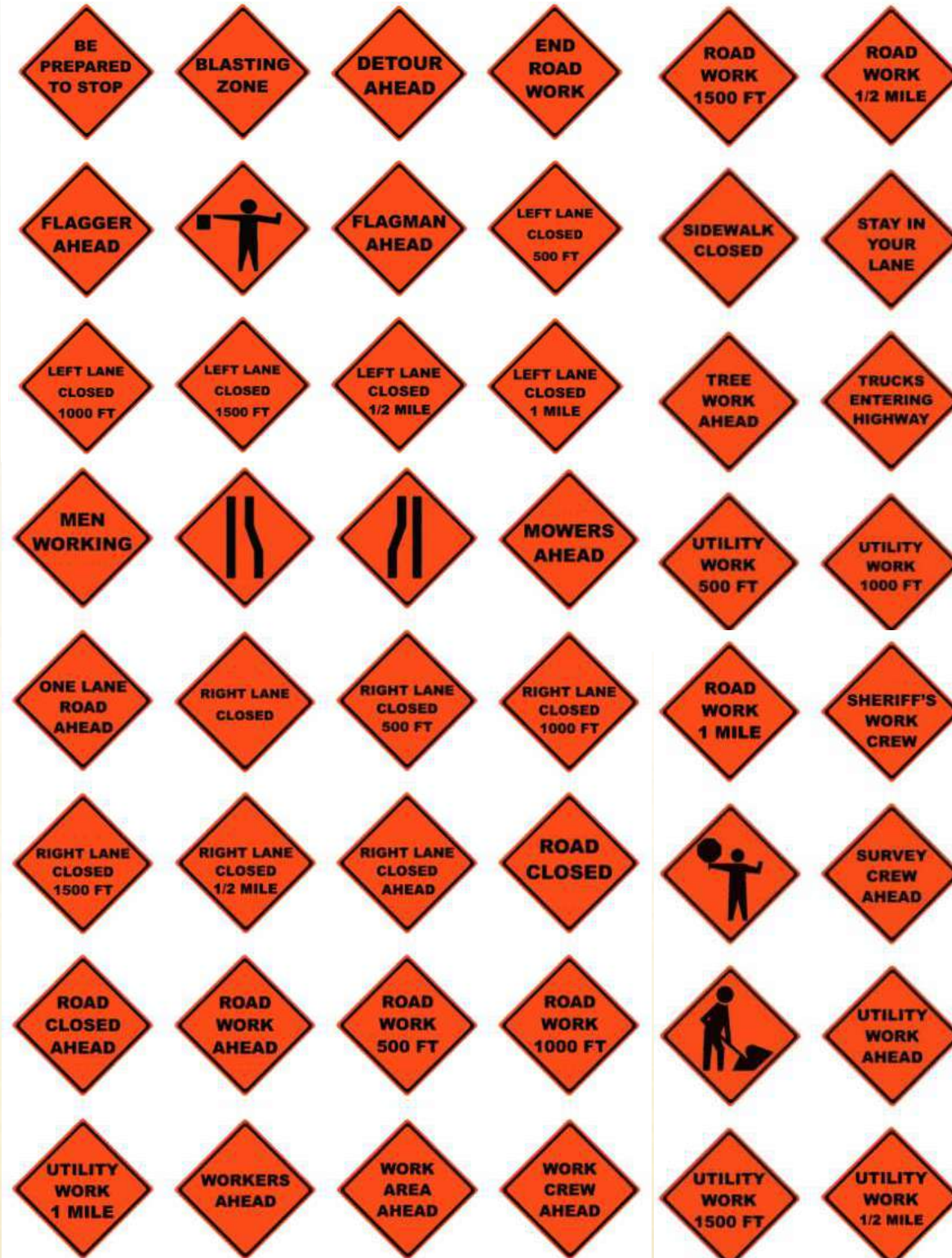
22300 – Traffix Single Spring Stand
■ Requires heavy duty frame with plastic corner pockets
■ Plastic pockets snap into bottom of stand
■ Spring loaded

22000 – Traffix Stand
■ Requires heavy duty frame with plastic corner pockets
■ Plastic pockets snap into bottom of stand

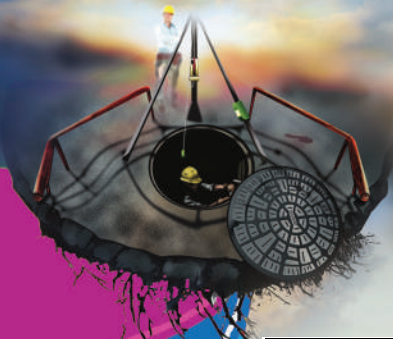


Roll-Up Vinyl & Mesh Sign Legends

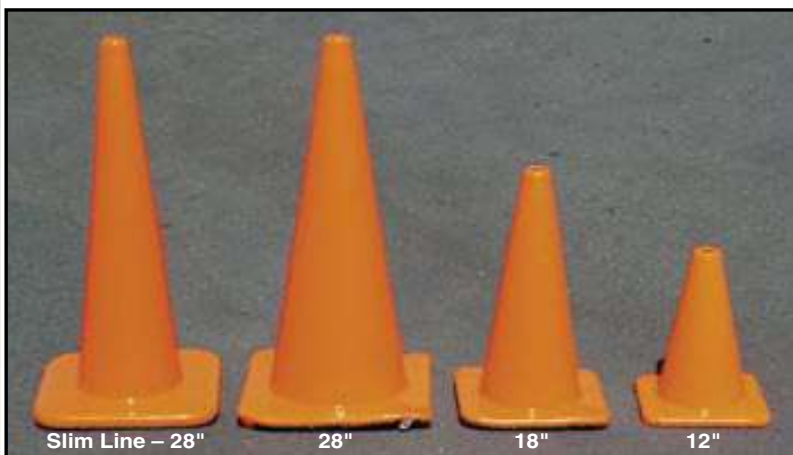
Standard legends for stock mesh and roll up vinyl signs.



Safety



TRAFFIC CONES



Traffic Cones

- Material: PVC
- Sizes:
 - 4312B** – 12" (1 1/2 lb.)
 - 4318B** – 18" (3 lb.)
 - 4328-E7B** – 28" (7 lb.) Slim Line
 - 4328B** – 28" (7 lb.)
 - 4328-10B** – 28" (10 lb.)
 - 4336B** – 36" (10 lb.)
- Imprint with name available on all cones



Reflectorized Cones

- Material: PVC
- Sizes:
 - 4328-10R64B** – 28" (10 lb.) with 6" upper, 4" lower collar
 - 4328R64B** – 28" (7 lb.) with 6" upper, 4" lower collar
 - 4328E764B** – 28" (7 lb.) Slim Line with 6" upper, 4" lower collar
 - 4318R6B** – 18" (3 lb.) with 6" collar
 - 4318R4B** – 18" (3 lb.) with 4" collar
- Can be imprinted with your name
- High Intensity Reflective Bands applied at the factory

Stick-On Collars for 28" Cone:

- 43413M** – 6" Upper
- 43473M** – 4" Lower



Reflectorized Slip-On Cone Collars

- High Intensity Grade White Reflective material
- Sizes: Available in 7" or 13" widths (Use 7" for 18" cone, 13" for 28" cone)
- Slips over cones
- Removable
- G-26-1554-002** – 7" collar
- G-38-1554-002** – 13" collar



Alternate Cone Colors

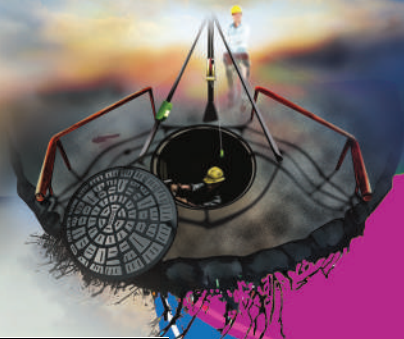
- Cones are available in White or Lime

Cone Holder

99DTCH

- Mounts on truck
- Will hold: ten 18" cones or five 28" cones





BARRICADES

Barricade Type 1



BP1080624E-14GS

- Height: 45"
- Width: 24"
- Weight: 15 Lbs.
- Top Board: 8" x 24"
- Reflective, Plywood
- Bottom Board: 6" x 24"
- Painted White, Plywood
- Legs: Angle Iron Galvanized
- Accepts Flasher with bolt removed
- Your name stenciled on bottom board
- Also available with plastic boards



Barricade Type 2

BP2080824E-14GS

- Height: 45"
- Width: 24"
- Weight: 16 Lbs.
- Top Board: 8" x 24"
- Reflective, Plywood
- Bottom Board: 8" x 24"
- Reflective, Plywood
- Legs: Angle Iron Galvanized
- Accepts Flasher with bolt removed
- Also available with plastic boards

Barricade Type 3



BP310848E-R-FT

- Height: 60"
- Width: 48"
- Weight: 48 Lbs.
- All Boards: 8" x 48"
- Reflective, Plywood
- Bottom Board: 6" x 24"
- Painted White, Plywood
- Legs & Feet: Angle Iron
- Accepts Flasher
- Also available in 8 foot widths



Universal Plastic Barricade

BU1080824-E

- Material: High-density Polyethylene
- Height: 45"
- Width: 24"
- Weight: 14 Lbs. (w/out sand)
- Sand Fillable (up to 30 Lbs.)
- Stackable
- Accepts Flasher
- Impact Resistant

Plastic Barricades



Metro-A-Cade Barricade

Single Rail

- 51204-REG2 – 4 ft. rail
- 51206-REG2 – 6 ft. rail
- 51208-REG2 – 8 ft. rail
- 51212-REG2 – 12 ft. rail
- NCHRP 350 approved with (2) standard Barricade Lights
- 40" durable plastic legs
- Accepts Phoenix Plastic Rails and 1" x 8" or 2" x 8" nominal lumber
- Available as Type 1 or Type 2 Barricade



Metro-A-Cade Barricade

Double Rail

- 40" durable plastic legs
- Accepts Phoenix Plastic Rails and 1" x 8" or 2" x 8" nominal lumber
- Available as Type 1 or Type 2 Barricade
- Accepts standard Barricade Light

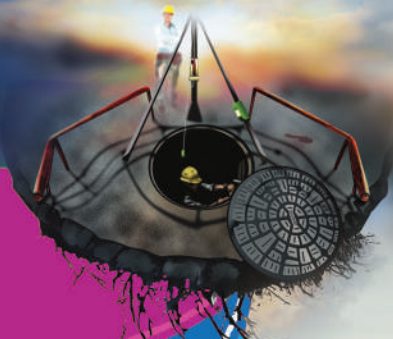


Plastic Legs-40" Tall

44040-IM

- Built-in stacking lugs for slip-free storage

Safety



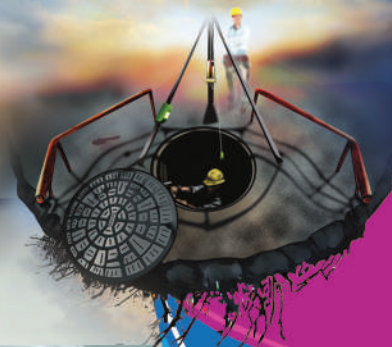
Safety



HOT WASHABLE

APX757HC36
"X-TRA" VISIBILITY ANSI CLASS 3 PARKA
Reflexite
Visibly Better®

FABRIC:	Shell-8oz polyester or poly/cotton twill treated with durable water repellant plus an added wind barrier of tightly woven polyester or nylon.
LINING:	Nylon satin.
ZIPPER:	#10 aluminum at front, #5 aluminum for hood, #5 coil for pockets, #5 aluminum for 747 liner on page 12.
REFLECTIVE:	ANSI 107-2004 Class 3 compliant. APO757SC3 and APY757SC3 use 3M® Scotchlite™ Reflective Material 9920; the APX757HC3 uses 3M® Scotchlite™ Reflective Material 6187 or Reflexite® GP350. Small size is ANSI Class 2 compliant.
INSULATION:	Thinsulate™ Insulation G200 or equivalent plus the optional 747 liner on page 12. These are heavy parkas.
POCKETS:	Zipper-closed, insulated dual use pockets and inside chest pocket. All pockets bartacked at stress points.
HOOD:	Zip-on hood, hook and loop and drawstring closed. The hood is included with the parka.
SIZES:	S(36-38), M(40-42), L(44-46), XL(48-50), 2X(52-54), 3X(56-58), 4X(60-62), 5X(64-66). TALLS ARE AVAILABLE AND SIZING UP TO 8X. Specials, 6X and above add 4 to 6 weeks for delivery.
CARE:	Machine wash hot, 140F, tumble dry delicate or medium, do not bleach or dry clean.



**ANSI
CLASS 3**

AJO759SC3b

ANSI CLASS 3 "HUMAN FORM"
JACKET-ORANGE

HOT WASHABLE

AJX759HC3b

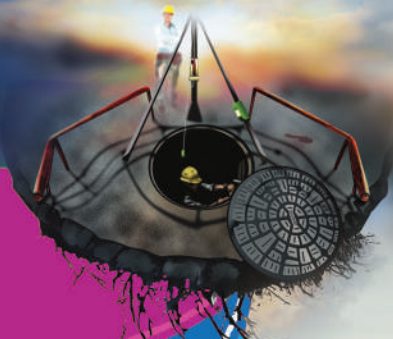
ANSI CLASS 3 "HUMAN FORM"
JACKET-"X-TRA" VISIBILITY

AJY759SC3b

ANSI CLASS 3 "HUMAN FORM"
JACKET-YELLOW

FABRIC:	Shell-8oz polyester or poly/cotton twill treated with durable water repellent plus an added wind barrier of tightly woven polyester or nylon.
LINING:	Nylon satin.
ZIPPER:	#10 aluminum at front, #5 aluminum for hood, #5 coil for pockets, #5 aluminum for 747 liner on page 12.
REFLECTIVE:	ANSI 107-2004 Class 3 compliant. AJO759SC3b and AJY759SC3b use 3M [™] Scotchlite [™] Reflective Material 9920; the AJX759HC3b uses Reflexite [®] GP350 or 3M [™] Scotchlite [™] Reflective Material 6187. Small size is ANSI Class 2 compliant.
INSULATION:	Thinsulate [™] Insulation G100 or equivalent plus the optional 747 liner on page 12. These jackets are medium weight.
POCKETS:	Zipper-closed, insulated dual use pockets and inside chest pocket-all pockets bartacked at stress points.
HOOD:	Optional zip-on hood is available with hook and loop closure. Optional hood on page 22.
SIZES:	S(36-38), M(40-42), L(44-46), XL(48-50), 2X(52-54), 3X(56-58), 4X(60-62), 5X(64-66). TALLS ARE AVAILABLE AND SIZING UP TO 8X. Specials, 6X and above add 4 to 6 weeks for delivery.
CARE:	Machine wash hot, 140F, tumble dry delicate or medium, do not bleach or dry clean.

Safety



FABRIC: Shell-8oz polyester or poly/cotton twill treated with durable water repellant plus an added wind barrier of tightly woven polyester or nylon.
LINING: Nylon satin.
ZIPPER: #10 aluminum
REFLECTIVE: ANSI 107-2004 Class 2 compliant. 3M[®] Scotchlite[™] Reflective Material 9920.
INSULATION: Thinsulate[™] Insulation G100. These are medium weight jackets.
POCKETS: Insulated hand warmer pockets. All pockets bartacked at stress points.
SIZES: S(36-38), M(40-42), L(44-46), XL(48-50), 2X(52-54), 3X(56-58), 4X(60-62), 5X(64-66). TALLS ARE AVAILABLE AND SIZING UP TO 8X. Specials, 6X and above add 4 to 6 weeks for delivery.
CARE: Machine wash hot, 140F, tumble dry delicate or medium, do not bleach or dry clean.



AJY755SC26
ANSI CLASS 2 THINLINE JACKET
YELLOW

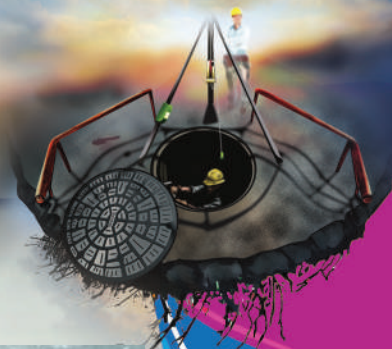


AJX755SC26
ANSI CLASS 2 THINLINE JACKET
"X-TRA" VISIBILITY



AJO755SC26
ANSI CLASS 2 THINLINE JACKET
ORANGE

HOT WASHABLE



Safety

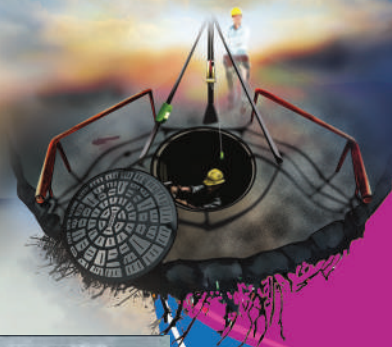
FABRIC:	Shell - 6 oz. waterproof polyurethane coated 200/210 denier nylon fabric.
LINING:	Optional 747 series zip in liner on page 12.
ZIPPER:	#10 aluminum zipper at front covered by a 3 in. wide hook and loop closed storm flap. #5 aluminum zipper for optional 747 series liner on page 12.
REFLECTIVE:	AJY, AJO and AJX are ANSI 107-2004 Class 3 compliant using 3M [®] Scotchlite [™] Reflective Material 6187 or Reflexite [®] GP340. The AJC is ANSI 107-2004 Class 1 compliant using 3M [®] Scotchlite [™] Reflective Material 6187 or Reflexite [®] GP340.
INSULATION:	Optional 747 series zip in liner on page 12.
POCKETS:	2 large front pockets hidden under the reflective vent flap.
HOOD:	Optional adjustable unlimited movement hood available on page 21.
SIZES:	S(36-38), M(40-42), L(44-46), XL(48-50), 2X(52-54), 3X(56-58), 4X(60-62), 5X(64-66). TALLS ARE AVAILABLE AND SIZING UP TO 8X. Specials, 6X and above add 4 to 6 weeks for delivery.
CARE:	Machine wash warm 105F, tumble dry delicate or medium, do not bleach or dry clean.



Safety

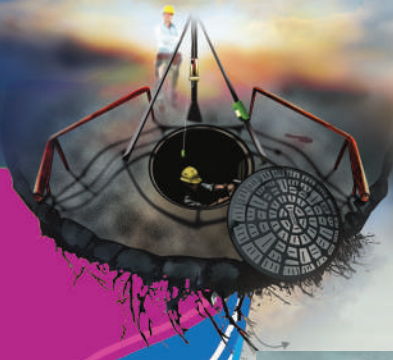


FABRIC:	Shell - 6 oz. waterproof polyurethane coated 200/210 denier nylon fabric.
LINING:	ACX781HC3 has an optional 747 series zip in liner on page 12.
ZIPPER:	ACX781HC3 - #10 aluminum zipper at front covered by a 3 in. wide hook and loop closed storm flap. #5 aluminum zipper for 747 series optional liner on page 12. 516 series - #10 aluminum front and each leg for boot access. 416 series - elastic waist band. 401 series - hook and loop secured adjustment
REFLECTIVE:	ACX781HC3 is ANSI 107-2004 Class 3 compliant using 3M [™] Scotchlite [™] Reflective Material 6187 or Reflexite [®] GP340. The 416 and 516 series are ANSI 107-2004 Class E compliant using 3M [™] Scotchlite [™] Reflective Material 6187 or Reflexite [®] GP340
INSULATION:	ACX781HC3 - optional 747 series zip in liner on page 12.
POCKETS:	ACX781HC3 - 2 large front pockets hidden under the reflective vent flap. 516 series - two front patch packets.
HOOD:	Optional adjustable unlimited movement hood available.
SIZES:	S(36-38), M(40-42), L(44-46), XL(48-50), 2X(52-54), 3X(56-58), 4X(60-62), 5X(64-66). TALLS ARE AVAILABLE AND SIZING UP TO 8X. Specials, 6X and above add 4 to 6 weeks for delivery.
BIB/PANTS:	S(26-28), M(30-32), L(34-36), XL(38-40), 2X(42-44), 3X(46-48), 4X(50-52), 5X(54-56). TALLS ARE AVAILABLE AND SIZING UP TO 8X. Specials, 6X and above add 4 to 6 weeks for delivery. Specify inseam length when ordering
CARE:	Machine wash warm, 105F. tumble dry delicate or medium, do not bleach or dry clean.



Safety

FABRIC:	Shell - 612 & 743 series 3+ oz. polyester mesh, 621 series 4+ oz polyester, 742 series 8 oz. polyester or poly/cotton twill treated with durable water repellant. Black Area - 612 series 1000D Cordura nylon or Ballistic nylon, 621 series 12-14 oz. black denim.
ZIPPER:	612 and 621 series-#5 aluminum and full length hook and loop closed protective flap. 742 and 743 series-#10 aluminum front and #5 coil in front pockets.
REFLECTIVE:	612 and 621 series-ANSI 107-2004 Class 2 compliant using 3M [™] Scotchlite [™] Reflective Material 6187 or Reflexite [®] GP340. 742 and 743 series - ANSI 107-2004 Class 2 compliant using 3M [™] Scotchlite [™] Reflective Material 8710 or 8725.
POCKETS:	612 and 621 series-2 large front patch pockets. 742 and 743 series-2 zippered utility, 3 pen/pencil slots and 1 cell phone slot, 1 for field book, 2 chest pockets with hook and loop straps for radio or calculator, 1 rear pass through and 2 large hook and loop closed nylon lined inside pockets, 12 total pockets. All pockets bartacked at stress points.
SIZES:	S(36-38), M(40-42), L(44-46), XL(48-50), 2X(52-54), 3X(56-58), 4X(60-62), 5X(64-66) TALLS ARE AVAILABLE AND SIZING UP TO 8X. Specials, 6X and above add 4 to 6 weeks for delivery.
CARE:	Machine wash warm, 105F, tumble dry delicate, do not bleach or dry clean.



Safety



FABRIC: Shell-127 and 103 series-3+ oz. polyester mesh.125 and 191 series-4+ oz. polyester.
ZIPPER: #5 aluminum except 103 series which is hook and loop closed.
REFLECTIVE: 125, 127 and 191 series- 69 sq. inches on medium size, 3M[®] Scotchlite[™] Reflective Material 8910.
103 series- 63 sq. inches on regular size, 3M[®] Scotchlite[™] Reflective Material 8910.
POCKETS: 125 and 127 series - left chest pocket. 191 series - 2 large inside, left chest patch pocket, 4 pen/pencil left chest and 2 medium patch pockets right chest.
SIZES: S(34-36), M(38-40), L(42-44), XL(46-48), 2X(50-52), 3X(54-56), 4X(58-60), 5X(62-64) TALLS ARE AVAILABLE AND SIZING UP TO 8X. Specials, 6X and above add 4 to 6 weeks for delivery.
MV*103 sizes: R(M-XL), 2X(2X-3X), 4X(4X+)
CARE: Machine wash warm, 105F, tumble dry delicate, do not bleach or dry clean.



DUO SAFETY LADDER CORPORATION

Duo-Safety Folding Ladders

The ultimate in handy, convenient ladders - Light weight, these ladders fold into a compact bundle for storing or carrying. In the open position, special locking devices keep the ladders absolutely rigid. Equipped with Duo-Safety Ladder shoes as an extra precaution. See our [Aluminum Price List](#) for current pricing.

Series 585-A Aluminum

- 300lb Duty Rated



Series 585-A



14" Rung Centers

Safety Shoes are Standard

SPECIFICATIONS

SERIES 585-A Aluminum

Size	Open Length	Closed Length	Open Width	Banking Dimensions	Weight
8'	8' .375"	8' 9.75"	12.12"	*1.75"x4.25"	13#
9'	9' 1.87"	10' .25"	12.12"	*1.75"x4.25"	15#
10'	10' 1.87"	11' .25"	12.12"	*1.75"x4.25"	16#
12'	12' .375"	12' 10.75"	12.12"	*1.75"x4.25"	20#
14'	14' .375"	14' 10.75"	12.12"	*1.75"x4.25"	22#

*Overall width includes shoes

All dimensions listed are N.F.P.A. Design Verification Standards. Variations occur in each product of approximately +/- .125" due to the type of rivets, nuts, bolts etc. used. If you require precise dimensions, please call our office and request a copy of our current field dimension sheets.

Safety



DUO SAFETY LADDER CORPORATION

Duo-Safety Pike Poles Fiberglass



Duo-Safety Fiberglass Pike Poles have an extruded aluminum head for durability and permanent molded-in yellow color. Available in 2' - 20' lengths. To cut shipping cost on single orders for 10 through 16 foot length, request United Parcel shipment of 2 part sleeved pole to be permanently assembled at destination. (Fee is charged for sleeving) See our [Price List](#) for current pricing.

SPECIFICATIONS Pole Diameter 1.75"

Weight

2 FP	1#
3 FP	2#
4 FP	3#
5 FP	4#
6 FP	5#
8 FP	6#
10 FP	7#
12 FP	8#
14 FP	9#
16 FP	10#
18 FP	12#
20 FP	14#



Part#

FP-DH D-Handle for fiberglass pole.

Duo-Safety D-Handles For Pike Poles

All welded aluminum construction. These large aluminum D Handles can be fitted to your in-service pike poles or ordered installed on new poles at the factory.