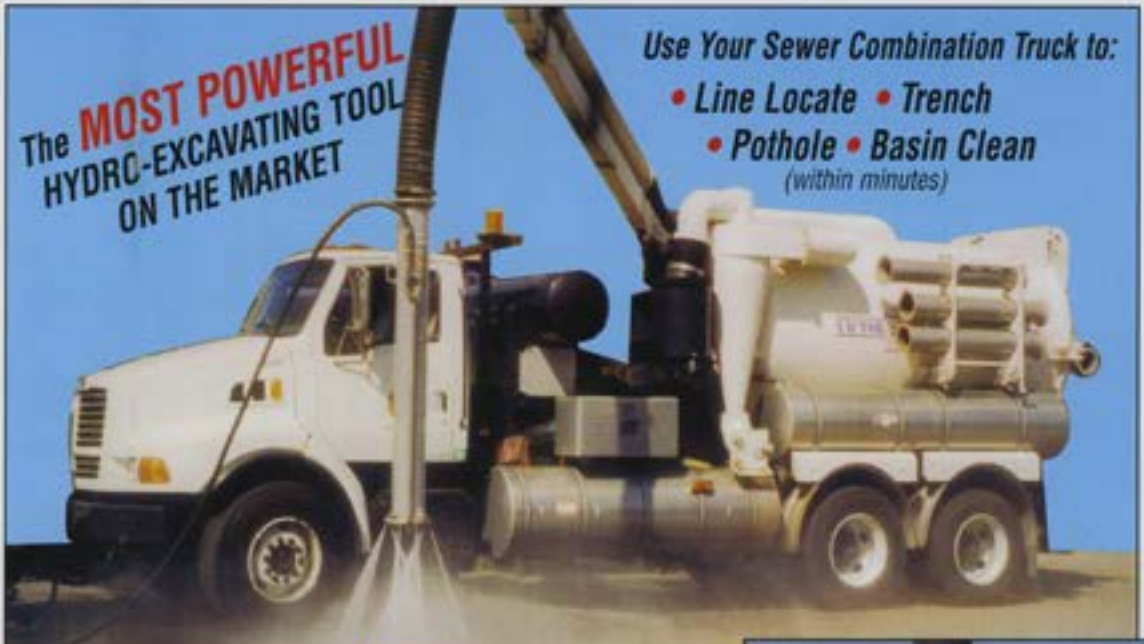




Vacuum/Accessories

THE SOIL SURGEON™



The **MOST POWERFUL**
HYDRO-EXCAVATING TOOL
ON THE MARKET

Use Your Sewer Combination Truck to:

- Line Locate
- Trench
- Pothole
- Basin Clean
(within minutes)



*Fits all truck
manufacture designs*

*Quick connects to
8 or 6 inch boom*

*You control water flow
pressure and power with the
truck's controls*

*Is designed to cut through
all types of soil*

- Features Include:**
- 6 Foot Tuff Tube
 - Y Connection for water and /or air
 - Handles for easy maneuvering
 - Water ring with tips boring inward to cut the soil and outward to get tube down
 - Bumpers on bottom to protect tips and lines





Intake Tube "Tuff Tube"



Welded Flanges on Both Ends - All Aluminum Tube
Used for suction of debris on Vector® Style type machines

UEMSI Part #	Size
UA34763L	6" X 24"
UA34763H	6" X 28"
UA34763D	6" X 36"
UA34763C	6" X 48"
UA34763A	6" X 60"
UA34763AA	6" X 72"
UA34763K	6" X 84"
UA34763E	6" X 90"
UA34763G	6" X 96"
UA34763F	6" X 120"
UA34763J	6" X 240"

UEMSI Part #	Size
UA25637N	8" X 12"
UA25637T	8" X 18"
UA25637Q	8" X 24"
UA25637K	8" X 28"
UA25637B	8" X 30"
UA25637C	8" X 36"
UA25637M	8" X 48"
UA25637	8" X 60"
UA25637J	8" X 70"
UA25637D	8" X 72"
UA25637R	8" X 78"
UA25637U	8" X 80"

UEMSI Part #	Size
UA25637P	8" X 82"
UA25637E	8" X 84"
UA25637F	8" X 90"
UA25637A	8" X 96"
UA25637V	8" X 102"
UA25637G	8" X 120"
UA25637W	8" X 144"
UA25637H	8" X 147"
UA25637L	8" X 180"
UA25637X	8" X 216"
UA25637S	8" X 240"

Catch Basin "Tuff Tube"



Welded Flange & Crown - All Aluminum Tube
Used for cleaning debris boxes on Vector® Style type machines

UEMSI Part #	Size
UA34766	6" X 24"
UA34766D	6" X 30"
UA34766H	6" X 36"
UA34766C	6" X 48"
UA34766J	6" X 60"
UA34766A	6" X 72"
UA34766B	6" X 78"
UA34766G	6" X 90"
UA34766F	6" X 96"
UA34766K	6" X 120"

UEMSI Part #	Size
UA25268Q	8" X 24"
UA25268A	8" X 32"
UA25268G	8" X 36"
UA25268F	8" X 42"
UA25268H	8" X 48"
UA25268C	8" X 60"
UA25268I	8" X 66"
UA25268D	8" X 72"
UA25268	8" X 78"
UA25268M	8" X 80"

UEMSI Part #	Size
UA25268M	8" X 80"
UA25268P	8" X 82"
UA25268B	8" X 84"
UA25268E	8" X 90"
UA25268J	8" X 96"
UA25268K	8" X 108"
UA25268L	8" X 120"
UA25268N	8" X 180"



Intake Tube "Tuff Tube"



Welded Band-Lok Ends - All Aluminum Tube

Used for cleaning of debris on Super Products® and Guzzler® type machines

UEMSI Part #	Size
S8510-00285	6" X 24"
S8510-01147	6" X 36"
S8510-00286	6" X 48"
S8510-01148	6" X 60"
S8510-01148A	6" X 72"
S8510-01371	6" X 84"
S8510-00287	6" X 96"
S8510-00285A	6" X 120"

UEMSI Part #	Size
S8510-00288	8" X 24"
S8510-01373	8" X 36"
S8510-00289	8" X 48"
S8510-01374	8" X 60"
S8510-01374A	8" X 72"
S8510-01375	8" X 84"
S8510-00290	8" X 96"
S8510-01376	8" X 120"

UEMSI Part #	Size
S8510-01376A	8" X 144"
S8510-01421	8" X 240"

Catch Basin "Tuff Tube"



Welded Crown & Male Band-Lok End - All Aluminum Tube

Used for suction of debris boxes on Super Products® and Guzzler® type machines

UEMSI Part #	Size
S8500-00454	6" X 34"
S8500-00455	6" X 36"
S8510-00287D	6" X 48"
S8510-00287B	6" X 60"
S8500-00455A	6" X 72"
S8510-00287AA	6" X 78"
S8510-00287A	6" X 96"

UEMSI Part #	Size
S8500-00453	8" X 24"
S8500-00453AM	8" X 30"
S8500-00453BM	8" X 36"
S8500-00453D	8" X 48"
S8500-00453E	8" X 60"
S8500-00453F	8" X 72"
S8500-00453J	8" X 78"

UEMSI Part #	Size
S8500-00453GG	8" X 84"
S8500-00453H	8" X 96"

Catch Basin "Tuff Tube"



Welded Crown & Female Band-Lok End - All Aluminum Tube

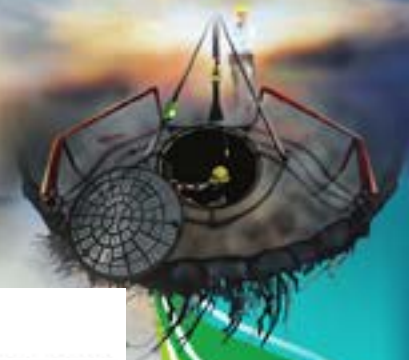
Used for cleaning of debris boxes on Super Products® and Guzzler® type machines

UEMSI Part #	Size
S8510-00287C	6" X 72"
S8510-00287AB	6" X 78"

UEMSI Part #	Size
S8500-00453DF	8" X 48"
S8500-00453EF	8" X 60"
S8500-00453FF	8" X 72"

UEMSI Part #	Size
S8500-00453JF	8" X 78"
S8500-00453G	8" X 84"





Flange "Tuff Tube"



Welded Hydro Kanaflex End / Flange - All Aluminum Tube
Used for hydro-excavation on Jet-Vac type machines

UEMSI Part #	Size
UA34763KHE	6" X 84"
UA34763EHE	6" X 90"

UEMSI Part #	Size
UA25637WHE	8" X 66"
UA25637RHE	8" X 78"
UA25637AHE	8" X 96"

Female Coup-Hydro Kanaflex End "Tuff Tube"



Riveted & Female Aquatech® Coupler/Hydro Kanaflex End - All Aluminum Tube
Used for hydro-excavation on Aquatech® type machines

UEMSI Part #	Size
AT238007HE	8" X 72"

Intake Tube "Tuff Tube"



Riveted Steel Flanges on both Ends - Aluminum Tube
Used for suction of debris on Vector® Style type machines

UEMSI Part #	Size
U34763H	6" X 28"
U34763D	6" X 36"
U34763C	6" X 48"
U34763A	6" X 60"
U34763AA	6" X 72"
U34763E	6" X 90"
U34763B	6" X 96"
U34763F	6" X 120"

UEMSI Part #	Size
U25637N	8" X 12"
U25637K	8" X 28"
U25637B	8" X 30"
U25637C	8" X 36"
U25637M	8" X 48"
U25637	8" X 60"
U25637J	8" X 70"
U25637D	8" X 72"

UEMSI Part #	Size
U25637P	8" X 78"
U25637E	8" X 84"
U25637F	8" X 90"
U25637A	8" X 96"
U25637G	8" X 120"
U25637H	8" X 147"
U25637L	8" X 180"
U25637Q	8" X 240"





Catch Basin "Tuff Tube"



Riveted Steel Flange & Crown - Aluminum Tube
Used for cleaning debris boxes on Vector® Style type machines

UEMSI Part #	Size
U34766-1	6" X 18"
U34766N	6" X 30"
U34766M	6" X 36"
U34766B	6" X 48"
U34766A	6" X 60"
U34766	6" X 78"
U34766E	6" X 84"
U34766G	6" X 90"

UEMSI Part #	Size
U34766F	6" X 96"
U34766D	6" X 120"
U34766L	6" X 180"
U25268A	8" x 30"
U25268G	8" x 36"
U25268F	8" x 42"
U25268H	8" x 48"
U25268C	8" x 60"

UEMSI Part #	Size
U25268M	8" x 72"
U25268	8" x 78"
U25268D	8" x 82"
U25268B	8" x 84"
U25268E	8" x 90"
U25268J	8" x 96"
U25268K	8" x 108"
U25268L	8" x 120"

Male Band-Lok End "Tuff Tube"



Welded Male Band-Lok / Hydro Kanaflex End - All Aluminum Tube
Used for hydro-excavation on Super Products® and Guzzler® type machines

UEMSI Part #	Size
S8500-00455AHE	6" X 72"
S8500-00455BHE	6" X 84"

Intake Tube "Tuff Tube"



Riveted Steel Aquatech® Couplers - All Aluminum Tube
Used for suction of debris on Aquatech® type machines

UEMSI Part #	Size
AT150461A	6" X 18"
AT150461	6" X 36"
AT150471	6" X 48"
AT150475	6" X 60"
AT150481	6" X 72"
AT150482	6" X 84"
AT150483	6" X 90"
AT150485	6" X 96"
AT150491	6" X 120"

UEMSI Part #	Size
AT238005	8" X 36"
AT238005A	8" X 48"
AT238006	8" X 60"
AT238007	8" X 72"
AT238007A	8" X 78"
AT238007AB	8" X 84"
AT238008	8" X 96"
AT238009	8" X 120"





Catch Basin "Tuff Tube"



Riveted Steel Female Aquatech® Coupler & Crown - All Aluminum Tube
Used for cleaning debris boxes on Aquatech® type machines

UEMSI Part #	Size
AT150161	6" X 36"
AT150171	6" X 48"
AT150325	6" X 60"
AT150181	6" X 72"
AT150182	6" X 78"

UEMSI Part #	Size
AT150186	6" X 96"
AT150191	6" X 120
AT238994	8" X 48"
AT238007B	8" X 60"

UEMSI Part #	Size
AT238007C	8" X 72"
AT238010B	8" X 78"
AT238010	8" X 96"
AT238010C	8" X 120"

Intake Tube



Riveted Steel Flanges on Both Ends - All Aluminum Tube
Used for suction of debris on Vac-All® type machines

UEMSI Part #	Size
VE908-12	12" X 12"
VE908-24	12" X 24"
VE908-48	12" X 48"
VE908-72	12" X 72"
VE908-96	12" X 96"

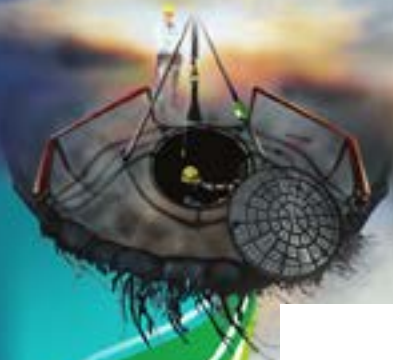
Catch Basin



Riveted Steel Flange & Crown - All Aluminum
Used for cleaning debris boxes on Vac-All® type machines

UEMSI Part #	Size
VE920-20	12" X 20"
VE920-56	12" X 56"
VE920-72	12" X 72"
VE920-80	12" X 80"
VE920-92	12" X 92"
VE920-96	12" X 96"





Intake Tube



Welded Steel Flanges on Both Ends - All Steel Tube
Used for suction of debris on Vactor® Style type machines

UEMSI Part #	Size
U53186	8" X 18"
U53186A	8" X 36"
U53186B	8" X 60"
U53186C	8" X 96"
U53186-G	8" X 101"
U53186CD	8" X 102"
U53186E	8" X 107"
U53186D	8" X 120"

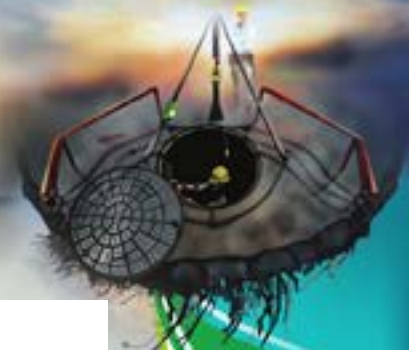
Catch Basin



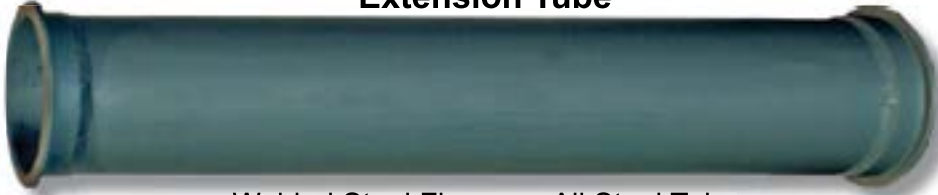
Welded Steel Flange & Crown - All Steel Tube
Used for cleaning debris boxes on Vactor® Style type machines

UEMSI Part #	Size
US54101X	8" X 60"
US54101Y	8" X 72"
US54101Z	8" X 78"





Extension Tube



Welded Steel Flanges - All Steel Tube

Used for tube extension on Vactor® Style type machines

UEMSI Part #	Size
U54101C	8" X 6"
U54101A	8" X 10"
U54101B	8" X 12"
U54101E	8" X 18"
U54101F	8" X 20"
U54101H	8" X 24"

UEMSI Part #	Size
U54101G	8" X 28"
U54101K	8" X 30"
U54101N	8" X 36"
U54101Q	8" X 42"
U54101S	8" X 46"
U54101T	8" X 48"

UEMSI Part #	Size
U54101W	8" X 54"
U54101X	8" X 60"
U54101Y	8" X 86"
U54101L	8" X 120"
U54101M	8" X 180"
U54101J	8" X 240"

Intake Tube



Welded Steel Flanges on Both Ends - All Steel Tube

Used for tube extension on Vac-All type machines

UEMSI Part #	Size
VE808-12	12" X 12"
VE808-24	12" X 24"
VE808-36	12" X 36"

UEMSI Part #	Size
VE808-48	12" X 48"
VE808-72	12" X 72"
VE808-96	12" X 96"

Catch Basin



Welded Steel Flange & Crown -All Steel

Used for cleaning debris boxes on Vac-All® type Machines

UEMSI Part #	Size
VE820-36	12" X 36"
VE820-56	12" X 56"

UEMSI Part #	Size
VE820-92	12" X 92"
VE820-96	12" X 96"





Tube Handles



Vactor® Tube Style Handle
Used on All 6" & 8" Tubes for Vactor® Super Products®, Guzzler® and Aquatech® Tubes

UEMSI Part #	Size
U63404	6"
U25262	8"

Reducer



Aquatech® Style Reducer

UEMSI Part #	Size
AT170220	6" to 4" Reducer
AT238213	8" to 6" Reducer

Reducer Couplings



Aluminum Serrated Crown

UEMSI Part #	Size
UA34767	6" Aluminum
UA23788	8" Aluminum

Reducer



Super Products® Reducer

UEMSI Part #	Size
S3000-01294	6" to 4" Reducer
S3000-00929	8" to 6" Reducer

Reducer Couplings



Steel Serrated Rivet Crown

UEMSI Part #	Size
U34767	6" Steel
U23788	8" Steel

Reducing Plate



Vactor® Style Flanged Reducing Plate

UEMSI Part #	Size
U34615	8" to 6" Reducing Plate

Transition



Vactor® Style Flanged Transition Reducer

UEMSI Part #	Size
U35096	8" to 6" Transition





Reducing Plate



Vector® Style Flanged Reducing Plate

UEMSI Part #	Size
U34614	6" to 4" Reducing Plate

Coupler



Male Coupler Aluminum Band-Lok
"Rainway" End

UEMSI Part #	Size
S3000-00781	6" Male Coupler
S3000-00783	8" Male Coupler

Coupler



Female Coupler Aluminum Band-Lok
"Rainway" End

UEMSI Part #	Size
S3000-00782	6" Female Coupler
S3000-00784	8" Female Coupler

Steel Galvanized Band-Lok



Band-Lok

UEMSI Part #	Size
U53492	6" X 90° Galvanized
U53488	8" X 90° Galvanized

Steel Pipe Flange



Vector® Style Flange on Both Ends

UEMSI Part #	Size
U53197	6" X 45° Steel
U53191	8" X 45° Steel

Steel Pipe Flange



Vector® Style Flange on Both Ends

UEMSI Part #	Size
U52985	6" X 90° Steel
U52977	8" X 90° Steel

Steel Galvanized Band-Lok



Band-Lok

UEMSI Part #	Size
U53494	6" X 45° Galvanized
U53490	8" X 45° Galvanized



Pipe Flange



Pipe Flange

UEMSI Part #	Size
U20735	4 1/8" Pipe Flange
U14915	5 1/8" Pipe Flange

Pipe Flange



Pipe Flange Punched

UEMSI Part #	Size
U15338	6 1/8" Pipe Flange

Pipe Flange



Pipe Flange Slotted

UEMSI Part #	Size
U43413	6" Pipe Flange

Pipe Flange



Pipe Flange Punched

UEMSI Part #	Size
U43414	8" Pipe Flange
U10749A	8 1/8" Pipe Flange

Pipe Flange



Pipe Flange with Rivet Drilled Holes,
Used on Vactor® Tubing

UEMSI Part #	Size
U15338C	6 1/8" Pipe Flange
U40011	8" Pipe Flange

Inside Female Gasket



Band-Lok Style Aluminum

UEMSI Part #	Size
S3500-0003AB	3" Inside Female Gasket
S3500-00003A	4" Inside Female Gasket
S3500-00002A	6" Inside Female Gasket
S3500-00001A	8" Inside Female Gasket

EZ Flange



Aluminum EZ Flange "weld on"
Used on Vactor® Tubing

UEMSI Part #	Size
U40011B	6" EZ Flange
U40011A	8" EZ Flange

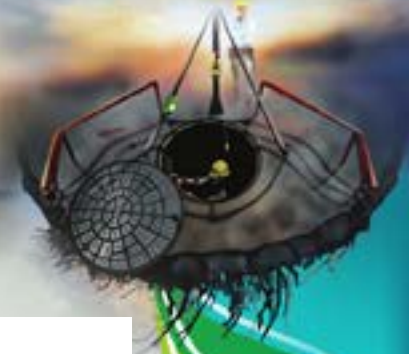
Inside Female Gasket



Band-Lok Style Steel

UEMSI Part #	Size
S3500-0003SB	3" Inside Female Gasket
S3500-00003S	4" Inside Female Gasket
S3500-00002S	6" Inside Female Gasket
S3500-00001S	8" Inside Female Gasket





O-Ring



Supertube Gasket

UEMSI Part #	Size
S3500-00207	4" O-Ring
S3500-00206	6" O-Ring
S3500-00205	8" O-Ring

Rubber Flange Gasket



Flange Gasket

UEMSI Part #	Size
U16585	8" Rubber

Aluminum Female Couplers



Used on Super Products Type Vacuum Tubes

Female Band-Lok Style Couplers w/Gasket

UEMSI Part #	Size
S3000-00784-4	4" Female
S3000-00782	6" Female
S3000-00784	8" Female

Aluminum Male Couplers



Used on Super Products Type Vacuum Tubes

Male Band-Lok Style Couplers

UEMSI Part #	Size
S3000-00783-4	4" Male
S3000-00781	6" Male
S3000-00783	8" Male

O-Ring



Aquatech Coupling Gasket

UEMSI Part #	Size
AT190770	4" O-Ring
AT190760	6" O-Ring
AT191080	8" O-Ring

Steel Female Hose End



Female Band-Lok Style Hose Ends w/Gasket

UEMSI Part #	Size
U42580A	3" Female
U42580	4" Female
U42581	6" Female
U42582	8" Female

Steel Male Hose End



Male Band-Lok Style Hose Ends

UEMSI Part #	Size
U42583B	3" Male
U42583	4" Male
U42584	6" Male
U42585	8" Male



**Aquatech® Style Steel Tube End
Riveted with Gasket**



Female

UEMSI Part #	Size
AT171230	6" Female
AT171240	8" Female

**Aquatech® Style Reducer
with Gasket**



Female To Male Reducer

UEMSI Part #	Size
AT238213	8" Female to 6" Male
AT170220	6" Female to 4" Male

**Aquatech® Style Steel
Riveted Tube End**



Aquatech® style Male Tube End

UEMSI Part #	Size
AT171280	6" Male
AT171290	8" Male

Aquatech® Style Hose End



Male Hose Coupler

UEMSI Part #	Size
AT171160	6" Male Hose Coupler
AT171290	8" Male Hose Coupler

Steel Ring



Rings sold separately

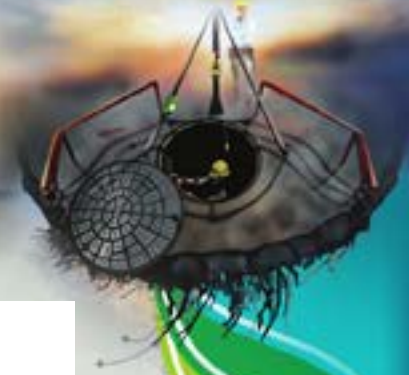
UEMSI Part #	Size
AT171180	4" Steel Ring
AT152930	6" Steel Ring
AT171300	8" Steel Ring

Vactor® Style Weldment



Hose End Weldment

UEMSI Part #	Size
U53348	6" Hose End Weldment
U58795	8" Hose End Weldment



Intake Clamp



Used on Vac-All® Style Machines

UEMSI Part #	Size
VE2557-12	12" Intake Clamp

Ring Clamp



Band-Lok Style

UEMSI Part #	Size
U42586B	3" Ring Clamp
U42586	4" Ring Clamp
U42587	6" Ring Clamp
U42588	8" Ring Clamp

King Clamp



Used on All Vacuum Machines

UEMSI Part #	Size
U42592	4" King Clamp
U42593	6" King Clamp
U42594	8" King Clamp

Quick Clamp



Used on Vactor® Style Machines

UEMSI Part #	Size
U17271/46471	5" Quick Clamp
U32087	6" Quick Clamp
U16584	8" Quick Clamp

*J Style 8" Clamps also available

Power Clamp



Used to Hold Kanaflex Style Hose onto Hose Ends

UEMSI Part #	Size
U43784	2" Power Clamp
U44215	2 1/2" Power Clamp
U70846	3" Power Clamp
U43389	4" Power Clamp
U43415	6" Power Clamp
U43388	8" Power Clamp
U45739	10" Power Clamp
U45606	12" Power Clamps

Elbow



Vactor® Style 70° Elbow

UEMSI Part #	Size
U27771	Vactor® Style 70° Regular Duty
U27771H	Vactor® Style 70° Heavy Duty
U27771H-SP	Vactor® Style 70° Heavy Duty w/ Mount Blanks
U27771-SP	Vactor® Style 70° Regular Duty w/ Mount Blanks