

100 & 200 Series: Pneumatic Single-Size



Example: 100-12

Example: 200-8-2

- User Friendly
- Exceeds Industry Standards
- Economical
- 1 Piece Forged Zinc Plated Eyelets
- Field Replaceable Inflation Fitting
- Positive Seal Ribs
- Manufactured From All Natural, Soft, Durable Rubber
- Pole Attachment Available

Pipe Plugs & Accessories

100 Series: Pneumatic Single-Size

PART #	SIZE RANGE	DIAMETER	LENGTH	WEIGHT	REQUIRED INFLATION PRESSURE	MAX ALLOWABLE BACK PRESSURE	
						AIR	WATER
100-4	3.5"-4.5"	3.5"	5.5"	1.5 lbs	25 psi	10 psi	25 ft
	90 mm-125 mm	90 mm	140 mm	0.67 kg	1.7 bar	0.69 bar	7.6 m
100-6	5.0"-6.5"	5.0"	6.0"	3.0 lbs	25 psi	10 psi	25 ft
	125 mm-175 mm	125 mm	152 mm	1.4 kg	1.7 bar	0.69 bar	7.6 m
100-8	7.0"-8.5"	7.0"	7.5"	5.0 lbs	25 psi	10 psi	25 ft
	175 mm-225 mm	175 mm	191 mm	2.3 kg	1.7 bar	0.69 bar	7.6 m
100-10	9.0"-10.5"	9.0"	10.0"	8.5 lbs	20 psi	10 psi	25 ft
	225 mm-275 mm	225 mm	254 mm	3.8 kg	1.4 bar	0.69 bar	7.6 m
100-12	11.0"-12.5"	11.0"	12.0"	12.5 lbs	20 psi	10 psi	25 ft
	275 mm-325 mm	275 mm	305 mm	5.6 kg	1.4 bar	0.69 bar	7.6 m
100-15	13.5"-15.5"	13.5"	15.0"	24.0 lbs	25 psi	10 psi	25 ft
	350 mm-400 mm	350 mm	381 mm	10.9 kg	1.7 bar	0.69 bar	7.6 m
100-18	16.5"-18.5"	16.5"	18.0"	33.5 lbs	25 psi	10 psi	25 ft
	425 mm-470 mm	425 mm	457 mm	15.5 kg	1.7 bar	0.69 bar	7.6 m
100-21	18.5"-21.5"	18.5"	21.0"	42.0 lbs	20 psi	8 psi	20 ft
	475 mm-550 mm	475 mm	533 mm	19.1 kg	1.4 bar	0.55 bar	6.1 m

200 Series: Pneumatic Single-Size with Bypass

PART #	SIZE RANGE	DIAMETER	LENGTH	WEIGHT	BYPASS SIZE	REQUIRED INFLATION PRESSURE	MAX ALLOWABLE BACK PRESSURE	
							AIR	WATER
200-4-1	3.5"-4.5"	3.5"	8.0"	1.5 lbs	1"	25 psi	10 psi	25 ft
	90 mm-125 mm	90 mm	203 mm	0.67 kg	25.4 mm	1.7 bar	0.69 bar	7.6 m
200-6-1	5.0"-6.5"	5.0"	8.0"	3.0 lbs	1"	25 psi	10 psi	25 ft
	125 mm-175 mm	125 mm	203 mm	1.4 kg	25.4 mm	1.7 bar	0.69 bar	7.6 m
200-8-2	7.0"-8.5"	7.0"	10.0"	6.0 lbs	2"	25 psi	10 psi	25 ft
	175 mm-225 mm	175 mm	254 mm	2.7 kg	50.8 mm	1.7 bar	0.69 bar	7.6 m
200-10-3	9.0"-10.5"	9.0"	13.0"	10.5 lbs	3"	20 psi	10 psi	25 ft
	225 mm-275 mm	225 mm	330 mm	4.8 kg	76.2 mm	1.4 bar	0.69 bar	7.6 m
200-12-4	11.0"-12.5"	11.0"	15.0"	15.5 lbs	4"	20 psi	10 psi	25 ft
	275 mm-325 mm	275 mm	381 mm	7.0 kg	101.6 mm	1.4 bar	0.69 bar	7.6 m
200-15-4	13.5"-15.5"	13.5"	19.0"	27.5 lbs	4"	25 psi	10 psi	25 ft
	350 mm-400 mm	350 mm	483 mm	14.5 kg	101.6 mm	1.7 bar	0.69 bar	7.6 m
200-18-4	16.5"-18.5"	16.5"	21.0"	40.5 lbs	4"	25 psi	10 psi	25 ft
	425 mm-470 mm	425 mm	533 mm	18.4 kg	101.6 mm	1.7 bar	0.69 bar	7.6 m
200-21-4	18.5"-21.5"	18.5"	24.0"	48.5 lbs	4"	20 psi	8 psi	20 ft
	475 mm-550 mm	475 mm	610 mm	22.0 kg	101.6 mm	1.4 bar	0.55 bar	6.1 m



250 Series: Single-Size High-Flow Diverters



Example: 250-8

250 Series: Single-Size High-Flow Diverters

- Use for Tie-In's to Structures
- Largest Bypass Available
- Eliminate Pumping Around When Working in Manholes or Structures
- All Aluminum Construction
- User Friendly - Easy to Work With
- For Manhole Rehab or Modifications
- Makes Ventilation Easier for Confined Space Entry
- Sold Individually



2 - 250-8's with 6" Flexible Bypass Hose

250 Series: Single-Size High-Flow Diverters							255 Series: Flexible Bypass Hose		
PART #	SIZE RANGE	DIAMETER	LENGTH	REQUIRED INFLATION PRESSURE	BYPASS SIZE	USES HOSE SIZE	PART #	DIAMETER	LENGTH
250-4	4.0"	3.0"	12.0"	25 psi	2.0"	▶	255-2	2.0"	5'-25'
	100 mm	76 mm	305 mm	1.7 bar	51 mm			51 mm	1.5 m-7.6 m
250-6	6.0"	5.0"	12.0"	25 psi	4.0"	▶	255-4	4.0"	5'-25'
	150 mm	127 mm	305 mm	1.7 bar	102 mm			102 mm	1.5 m-7.6 m
250-8	8.0"	7.0"	12.0"	25 psi	6.0"	▶	255-6	6.0"	5'-25'
	200 mm	178 mm	305 mm	1.7 bar	152 mm			152 mm	1.5 m-7.6 m
250-10	10.0"	9.0"	15.0"	25 psi	8.0"	▶	255-8	8.0"	5'-25'
	250 mm	229 mm	381 mm	1.7 bar	203 mm			203 mm	1.5 m-7.6 m
250-12	12.0"	10.0"	17.0"	25 psi	10.0"	▶	255-10	10.0"	5'-25'
	300 mm	254 mm	432 mm	1.7 bar	254 mm			254 mm	1.5 m-7.6 m
250-15	15.0"	13.5"	18.0"	25 psi	12.0"	▶	255-12	12.0"	5'-25'
	375 mm	343 mm	457 mm	1.7 bar	305 mm			305 mm	1.5 m-7.6 m
250-18	18.0"	16.0"	18.0"	25 psi	14.0"	▶	255-14	14.0"	5'-25'
	450 mm	406 mm	457 mm	1.7 bar	356 mm			356 mm	1.5 m-7.6 m
250-21	21.0"	19.5"	18.0"	25 psi	18.0"	▶	255-18	18.0"	5'-25'
	525 mm	495 mm	457 mm	1.7 bar	457 mm			457 mm	1.5 m-7.6 m
250-24	24.0"	22.5"	18.0"	25 psi	20.0"	▶	255-20	20.0"	5'-25'
	600 mm	572 mm	457 mm	1.7 bar	508 mm			508 mm	1.5 m-7.6 m
250-27	27.0"	25.5"	18.0"	25 psi	24.0"	▶	255-24	24.0"	5'-25'
	675 mm	648 mm	457 mm	1.7 bar	610 mm				
250-30	30.0"	28.5"	18.0"	25 psi	24.0"			610 mm	1.5 m-7.6 m
	750 mm	724 mm	457 mm	1.7 bar	610 mm				

Larger Sizes Available! Call 800.575.8448



255 Series: Flexible Bypass Hose

- Sold in 5 ft. Increments
- Lightweight Rubber
- Wire Reinforced
- 2" - 24" I.D.
- Larger Sizes Available Upon Request

250 Series: Single-Size High-Flow Diverters

Pipe Plugs & Accessories



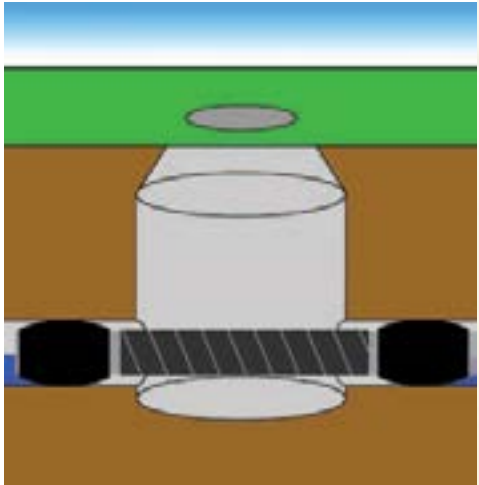
Custom 250 Series High-Flow setup with 8", 12", 18", & 24" bypass. Used in Santa Barbara, California to contain flow while 12 manholes were built. No pumping around was required!



2 - 250-48 with 42" bypass picking up an 8" drop inlet with a 250-8 and a custom 90° elbow



250-48 with a 42" bypass at a 22° angle



Example of 2 High-Flows & Duct installed, resulting in a dry manhole. Flexible duct can be lifted up to work in channel