



*Electric Eel*<sup>®</sup>  
**YOUR COMPLETE SOURCE**  
*For Drain & Sewer Cleaning from Drainlines to Mainlines!*

# Flushing and Accessories



Flushing/Accessories



Flushing/Accessories

## 300 Gallon Platform Series

The **US Jetting 300 Gallon Platform Series** of High Pressure Jetting units is a modular component concept of heavy duty single axle trailers for the mounting of selected **US Jetting PumpSets**. This unique concept allows the customer to participate in the design and selection of **US Jetting** units to match their specific performance and job requirements.



The central design feature is a single 300 gallon water storage tank with an additional structural capacity for the inclusion of a selected **US Jetting PumpSet** and hose reel systems. The frame is constructed of welded tubular steel with a powder coated baked-on finish for years of durability. A single 7,000 pound rated Torque-Flex axle

with LT245/R75-16 tires with an electric brake system ensures towing ease behind a service van or pick-up truck.





**US Jetting PumpSet Selection Chart**

Pump	Engine	Horse-Power	Gen II Wireless Remote	Max. PSI	Water Flow (GPM)	No. Of Cyls. (Pump)	Hose Dia.	ByPass Valve Opt/Std	Jump Jet Opt/Std
<b>USJ 3010</b>	Lombardini	26	N/A	3,000	10	3	1/2"	NO	OPT
<b>USJ 4008</b>	Lombardini	26	N/A	4,000	8	3	1/2"	NO	OPT
<b>USJ 3025</b>	Hatz 3-Cyl NS	49	N/A	3,000	25	3	5/8"	STD	STD
	Hatz 3-Cyl Silent Pack	48	OPT	3,000	25	3	5/8"	STD	STD
	Deutz 4-Cyl	48	OPT	3,000	25	3	5/8"	STD	STD
<b>USJ 4016 RPD</b>	Hatz 3-Cyl NS	49	N/A	4,000	16	8	1/2"	STD	OPT
	Hatz 3-Cyl Silent Pack	48	OPT	4,000	16	8	1/2"	STD	OPT
	Deutz 4-Cyl	48	OPT	4,000	16	8	1/2"	STD	OPT
<b>USJ 4018</b>	Hatz I 3-Cyl NS	49	N/A	4,000	18	3	1/2"	STD	STD
	Hatz 3-Cyl Silent Pack	48	OPT	4,000	18	3	1/2"	STD	STD
	Deutz 4-Cyl	48	OPT	4,000	18	3	1/2"	STD	STD
<b>USJ 4025</b>	Hatz 4-Cyl Silent Pack	66	OPT	4,000	25	3	5/8"	STD	STD
	Deutz 4-Cyl Turbo	72	OPT	4,000	25	3	5/8"	STD	STD

**Flushing/Accessories**

**US Jetting 4018 Pump**  
4000 PSI @ 18 GPM



**The US Jetting Pump**

The key to **US Jetting** high pressure jetting units is the pump. The stainless steel fluid head with a proprietary **US Jetting** internal design provides reliable long term high pressure performance. The **US Jetting** Pump is so durable it can run dry without damage. When maintenance is required, seals and cartridge style check valves can be replaced in less than an hour.



Flushing/Accessories

### **US Jetting 4018 Hatz Silent Pak Pump Set**



### **300 Gallon Platform Series Standard Features**

- Jump Jet Pulsation System
- Anti-Freeze System
- Swivel Hose Reel with 7 Locking Positions
- 500 Feet of High Pressure Hose
- Colored safety Leader Hose
- 3 Rear, 1 Forward & 6 Rear RPD Nozzle
- Tiger Tail Hose Protector
- Drain Jet Extension
- Hydraulic Powered Hose Reel with a Capacity of 700 Feet of ½ High Pressure Hose
- 2" Anti-Siphon Water Fill Connection
- Torque Flex Axle, 7,000 lb. Rated
- LT-245/75R 16 Radial Tires on 8 Bolt Chrome Wheels
- Electric Brakes with Battery Backup Breakaway Activator or Hydraulic Over-Run Braking System
- Amber Electric Strobe Light
- Dual Lockable Tool Boxes with 8 Cu. Ft. of Storage.
- Rear Open Storage Area
- Water Level Gauge
- D.O.T. Compliant Light System
- L.E.D. and Analog Pressure Gauges
- Weather Proof Control Panel
- 2-<sup>3</sup>/<sub>16</sub>" Ball Hitch with Lock
- Easy Lube Axle Wheel Bearings

### **GEN II Wireless Remote & Power Pull-Out Reel**



*The two most popular options combine to give a single operator total unit control at the jobsite, even when working within or on top of a building.*

### **Gen II Wireless Remote Control System**



*Remote control by a single operator can be fitted to most units. Choice of Foot Activated Control or Handheld – Belt Control.*



### 300 Gallon Platform Series Optional Features

- Power Pull Out Hose Reel
- Gen II Wireless Remote Control System
- Inlet Hose Reel for Water Supply
- Detachable Accessory Carry Hose Reels for Mini & Micro-Jet Kits
- Optional Special Paint
- Electronic Arrow Signboard
- Pintle Hitch
- Hydraulic Powered Hose Reel with a Capacity of 1000 Feet of ½ High Pressure Hose

### Mini-Jet Kit & Detachable Hose Reel



Portable hose reel with an attached high pressure swivel keeps a Mini-Jet Hose Kit neat, tangle free and accessible for easy use.



Flushing/Accessories



**300 Gallon Platform Series** units are available in optional custom colors to complement existing company or municipal color schemes.

The **300 Gallon Platform Series** is a proven and profitable performer with all nationally recognized sewer and drain cleaning franchises. Units incorporate many standard features required for pipeline cleaning market that are considered options by other manufacturers.





## 600 Gallon Platform Series

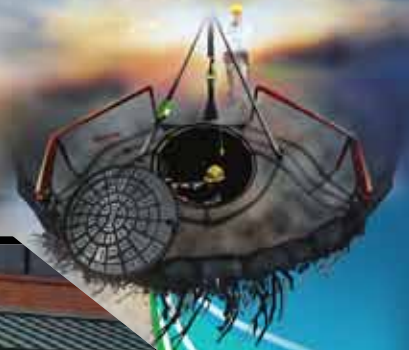
The **US Jetting 600 Gallon Platform Series** of High Pressure Jetting units is a modular concept of heavy duty tandem axle trailers for the mounting of selected **US Jetting PumpSets**. This unique concept allows the customer to participate in the design and



selection of **US Jetting** units to match their specific performance and job requirements.

The central design feature is based on twin 300 gallon water storage tanks (600 gallon total capacity) with the structural capacity for the inclusion of a selected **US Jetting PumpSet** and hose reel system(s). The frame is constructed of welded tubular steel with a powder coated baked-on finish for years of durability. A set of 6,000 pound rated Torque-Flex axles with LT245/R75-16 tires with an electric brake system ensures towing stability at highway speeds behind a service van or pick-up truck.





Flushing/Accessories

**US Jetting 600 Gallon Platform Series** provides more water for increased jetting time and reduces time wasted refilling.

## US Jetting 4018 Pump



### The US Jetting Pump

The key to **US Jetting** high pressure jetting units is the pump. The stainless steel fluid head with a proprietary **US Jetting** internal design provides reliable long term high pressure performance. The **US Jetting** Pump is so durable it can run dry of water without damage. When maintenance is required, seals and cartridge style check valves can be replaced in less than an hour.

**Flushing/Accessories**

**US Jetting PumpSet Selection Chart**

<i>Pump</i>	<i>Engine</i>	<i>Horse-Power</i>	<i>Gen II Wireless Remote</i>	<i>Max. PSI</i>	<i>Water Flow (GPM)</i>	<i>No. Of Cyls. (Pump)</i>	<i>Hose Dia.</i>	<i>ByPass Valve Opt/Std</i>	<i>Jump Jet Opt/Std</i>
<b>USJ 2036</b>	Hatz 3-Cyl NS	49	N/A	2,000	36	3	3/4"	NO	OPT
	Hatz 3-Cyl Silent Pack	48	OPT	2,000	36	3	3/4"	STD	STD
	Deutz 4-Cyl	48	OPT	2,000	36	3	3/4"	STD	STD
<b>USJ 3025</b>	Hatz 3-Cyl NS	49	N/A	3,000	25	3	5/8"	STD	STD
	Hatz 3-Cyl Silent Pack	48	OPT	3,000	25	3	5/8"	STD	STD
	Deutz 4-Cyl	48	OPT	3,000	25	3	5/8"	STD	STD
<b>USJ 4016 RPD</b>	Hatz 3-Cyl NS	49	N/A	4,000	16	8	1/2"	STD	OPT
	Hatz 3-Cyl Silent Pack	48	OPT	4,000	16	8	1/2"	STD	OPT
	Deutz 4-Cyl	48	OPT	4,000	16	8	1/2"	STD	OPT
<b>USJ 4018</b>	Hatz 3-Cyl NS	49	N/A	4,000	18	3	1/2"	STD	STD
	Hatz 3-Cyl Silent Pack	48	OPT	4,000	18	3	1/2"	STD	STD
	Deutz 4-Cyl	48	OPT	4,000	18	3	1/2"	STD	STD
<b>USJ 4025</b>	Hatz 4-Cyl SilentPak	66	OPT	4,000	25	3	5/8"	STD	STD
	Deutz 4-Cyl Turbo	72	OPT	4,000	25	3	5/8"	STD	STD
<b>USJ 3036 / 6018</b>	Deutz 2012 4-Cyl Turbo	137	N/A	3,000 6,000	36 18	3	3/4" 1/2"	STD	STD





**US Jetting 4025 Hatz Silent Pak Pump Set on 600 Gallon Trailer**



**Gen II Wireless Remote Control System**



*Remote control system can be installed on 600 Gallon Platform Series units. Choice of Foot Activated Control or Handheld – Belt Control.*

**GEN II Wireless Remote & Power Pull-Out Reel**



*The two most popular options combine to give a single operator total unit control at the jobsite, even when working within or on top of a building.*

**600 Gallon Platform Series Standard Features**

- Jump Jet Pulsation System
- Swivel Hose Reel with 7 Locking Positions
- Anti Freeze System
- 500 Feet of High Pressure Hose
- Colored safety Leader Hose
- 3 Rear, 1 Forward RPD Nozzle
- 6 Rear RPD Nozzle
- Tiger Tail Hose Protector
- Drain Jet Extension
- Hydraulic Powered Hose Reel with a Capacity of 700 Feet of ½ High Pressure Hose
- 2" Anti-Siphon Water Fill Connection
- Tandem 6,000 lb Torque Flex Axles
- LT-245/75R 16 Radial Tires on 8 Bolt Chrome Wheels
- Electric Brakes with Battery Backup Breakaway Activator or Hydraulic Over-Run Braking System
- Amber Electric Strobe Light
- Dual Lockable Tool Boxes with 8 Cu. Ft. of Storage.
- Rear Open Storage Area

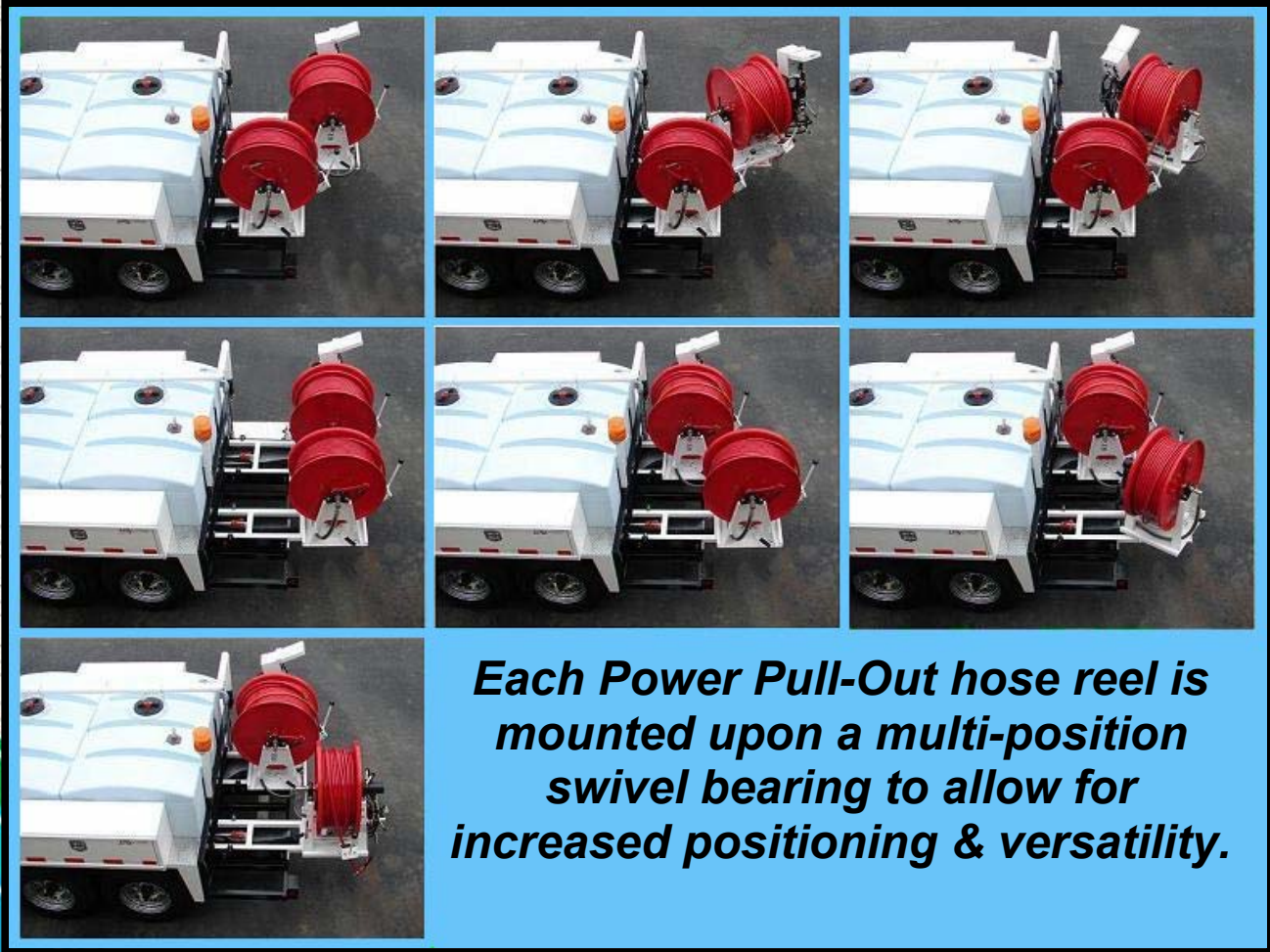
**Flushing/Accessories**



Flushing/Accessories



The **Dual Hydraulic Power Pull-Out Hose Reel** is a popular option for **US Jetting 4025** units. One hose reel is equipped with 500 feet of 5/8" diameter high pressure jetting hose & the other hose reel contains 500 feet of 1/2 " high pressure jetting hose.



**Each Power Pull-Out hose reel is mounted upon a multi-position swivel bearing to allow for increased positioning & versatility.**



**600 Gallon Platform Series Optional Features**

- Power Pull-Out Hose Reel
- Dual Power Pull-Out Hose Reels
- Gen II Wireless Remote Control System
- Inlet Hose Reel for Water Supply
- Detachable Accessory Carry Hose Reels for Mini & Micro-Jet Kits
- Optional Special Paint
- Electronic Arrow Signboard
- Pintle Hitch
- Hydraulic Powered Hose Reel with a Capacity of 1000 Feet of ½ High Pressure Hose

**600 Gallon Platform Series**

*Units are available in optional custom colors to match any company or municipal color scheme.*

**Single 2" Water Fill Line Connection Supplies Twin 300 Gallon Water Tanks**



Flushing/Accessories



**Dual hose reels can be ordered in fixed position configuration.**



**Detachable Hose Reel & Mini-Jet Kit**



Portable hose reel with an attached high pressure swivel keeps a Mini-Jet Hose Kit neat, tangle free and accessible for easy use.



**US Jetting  
Drain Cleaning  
Accessories**

- Sewer & Drain Nozzles
- Spinning Nozzles
- Chain Flail – Scraper Nozzles
- Safety Dump Guns
- Shut-Off Guns
- Safety Colored Leader Hose
- Mini-Jet Hose Kits
- Micro Mini-Jet Kits
- Tiger Tail Hose Guide
- Jet Vac Pump
- Drain Jet Extensions
- Centralizer Skids



Two lockable toolboxes provide ample space for nozzle & accessory storage.

**For Versatility & Productivity**