

PROFESSIONALLY ENGINEERED TO CLEAN 2" TO 8" DRAIN LINES



**ELECTRIC EEL
EEL JET ELECTRIC & GAS JETTERS**

- POWER AND**
- PORTABILITY**
- FOR A FAST BLAST**
- THROUGH CLOGGED**
- DRAIN LINES**



Sludge. Ice. Grease. Sand. Soap. Dirt. Debris. Whatever the problem, Electric Eel steel nozzles will penetrate and clean tough problems from pipe walls with a variety of spray angles.



Flushing/Accessories

NOBODY

MAKES A

BETTER JETTER

THAN

ELECTRIC EEL

ELECTRIC EEL

EEL JET EJ1500 ELECTRIC & EJ3000 GAS JETTERS



Portable Hose Reel



Hose Reel With Cart



Eel Jet EJ1500 Electric Jetter

- Cleans 1½"– 4" Dia. Drain Lines.
- 1500 PSI / 1.7 GPM.
- 1.5 H.P., 15 AMP Motor.
- Duplex Pump w/Pulsation.
- Reel Capacity 150 Ft. of 1/4" Hose.



- Pump/Motor Assembly Removes in Seconds for Added Portability.

- Sturdy 10" Pneumatic Tires for Ease of Transport.
- Thermal Relief Valve and Inlet Shut Off Valve.
- Removable Handle/Reel on Cart Assembly.
- Utilizes 1/8" and 1/4" Dia. Jet Hose.
- 20 Ft. Power Cord w/GFCI.

Eel Jet EJ3000 Gas Jetter

- Cleans 2"– 8" Dia. Lines up to 300 Ft.
- 3000 PSI / 4.7 GPM.
- 13 HP Overhead Valve Engine for Smooth Quiet Running and Dependable Operation – **Electric Start Available.**
- 2-to-1 Gear Reduced Triplex Pump with Pulsation for Longer Life.
- 300 Ft. Capacity Hose Reel.
- 12" Pneumatic Tires for Easy Maneuverability on Rugged Steel Base with Front Bar for Motor Protection.
- Heat Shield to Protect Hose.
- Convenient Nozzle Storage on Unit.
- Throttle Back Control Automatically Adjusts Engine Speed.
- Low Tone Muffler for Quiet Operation.
- Utilizes 1/4" and 3/8" Dia. Jet Hose.



USB-Sewer Equipment Corporation proudly distributes innovative, high quality sewer cleaning equipment, precision engineered and manufactured by the duly ISO EN 9001:2000 certified parent company USB Duesen in Germany to the highest technical standards.

These products are leaders in the industry and include nozzles, turbo chain cutters, milling cutters, specialty tools and accessories for the municipal and industrial markets.

USB sewer cleaning nozzles are manufactured with Advanced, Optimized 3D Hydro Mechanics™. That means, the water coming from the pressurized hose is smoothly turned around in the nozzle chamber and guided directly into the ceramic nozzle inserts by means of 5 axial CNC precision machined, duly debured channels, not tubes or grooves.

USB nozzles utilize tempered stainless steel and ceramic nozzle inserts thus providing unrivaled cleaning efficiency and durability. As a result USB nozzles can be used with recycled water too!

Our goal is to enable our customers to increase their productivity and lower their operating costs by consuming less water, less time and less gas for the jetter trucks.

USB sewer cleaning equipment is affordably priced. You get the most bang for your buck!

USB-Sewer Equipment Corporation is pleased to provide industry leading customer service and technical support.

USB-SEC's products include:

- Primus nozzles-3D
- Alphajet nozzles
- Standard nozzles
- Black Star nozzles
- Sewer cleaning nozzles with Advanced Optimized 3D Hydro Mechanics™
- Dredger nozzles-3D
- Venturi nozzles
- Turbo chain cutters
- Milling cutters
- Accessories



Advanced Optimized 3D Hydro Mechanics™

PRIMUS NOZZLE™ - 3D

The Primus™ is a sewer cleaning nozzle with controlled rotation speed. Our Primus™ is operated by water coming from a pressurized hose. The controlled rotation occurs because the angle of jet incidence in the cleaning head works in conjunction with internal high performance ceramic clutch discs.

Advantages:

- No lubrication or replacement of internal mechanical parts within the first 12 months of operation, thus making this nozzle extremely user friendly
- Can be used in combination with a continuously adjustable flexible guide skid to center in the pipe
- Capable of being used with recycled water
- Reduced water consumption
- Reduced operating costs

Applications: Grease, scale, crusts and roots

Technical Specifications:

- Advanced, Optimized 3D Hydro Mechanics™
- Replaceable threaded ceramic nozzle inserts in the head
- Replaceable threaded steel inserts in the rear
- Stainless steel body construction
- Rear angle of jet incidence is 15°
- Rear of the head jet incidence is 45°
- Forward jet is 18°
- ½"-1 ¼" hose connection
- Min. 14gpm @ ½"
- Max. 120gpm @ 1 ¼"





Flushing/Accessories



Part No.	Hose Connection	Nozzle inserts	Pipe Ø	Weight in lbs	Length in inch
1 – 0500-1840-C	½"	5 M6	4" – 8"	4.0	4.50"
1 – 0501-5030-C	¾"	10 M6	6" – 12"	7.0	7.50"
1 – 0502-6020-C	1"	12 M6	6" – 15"	7.0	8.25"
1 – 0502-8020-C	1"	12 M6	6" – 15"	7.0	8.25"
1 – 0503-8020-C	1 ¼"	8 M6, 4 SW 14	12" & up	10.0	8.75"
1 – 0503-10020-C	1 ¼"	8 M6, 4 SW 14	12" & up	10.0	8.75"

GRAND SLAM – 3D NOZZLE

The Grand Slam nozzle-3D is impressive and able to clean and move material in an effective manner. The 8 rear jets provide powerful traction.

Advantages:

- Two different angles of rear jet incidence
- Capable of being used with recycled water
- Reduced water consumption
- Reduced operating costs

Applications: For all around sewer cleaning

Technical Specifications:

- Advanced, Optimized 3D Hydro Mechanics™
- Replaceable ceramic nozzle inserts
- Stainless steel construction
- Rear angle of jet incidence is 12° and 18°
- ¾" – 1 ¼" hose connection
- Min. 50gpm @ ¾"
- Max. 120gpm @ 1 ¼"



**Extended warranty 36 months
with ceramic nozzle inserts**

Part No.	Hose Connection	Nozzle inserts	Pipe Ø	Weight in lbs	Length in inch	Width in inch
1 – 0100-5030-C	¾"	8	6" – 15"	13.0	7.10"	3.75"
1 – 0101-6020-C	1"	8	6" – 15"	13.0	7.10"	3.75"
1 – 0101-8020-C	1"	8	6" – 15"	13.0	7.10"	3.75"
1 – 0102-10020-C	1 ¼"	8	6" – 15"	13.0	7.10"	3.75"



SUPER SLAM – 3D NOZZLE

The Super Slam-3D nozzle is a very powerful and impressive nozzle. The two different angles of rear jet incidence in combination with 12 jets offer extraordinary cleaning power and traction.

Advantages:

- Heavy Design
- Number of jets
- Capable of being used with recycled water
- Reduced water consumption
- Reduced operating costs

Applications: For use in large sewer- and stormwater lines.

Technical Specifications:

- Advanced, Optimized 3D Hydro Mechanics™
- Replaceable threaded ceramic nozzle inserts
- Stainless steel construction
- Rear angle of jet incidence is 15° and 30°
- ¾"-1 ¼" hose connection
- Min. 55gpm @ ¾"
- Max. 120gpm @ 1 ¼"



**Extended warranty 36 months
with ceramic nozzle inserts**

Part No.	Hose Connection	Nozzle inserts	Pipe Ø	Weight in lbs	Length in inch	Width in inch
1 – 0110-6020-C	1"	12	10" – 40"	19.0	7.50"	4.10"
1 – 0110-8020-C	1"	12	10" – 40"	19.0	7.50"	4.10"
1 – 0111-10020-C	1 ¼"	12	10" – 40"	19.0	7.50"	4.10"



SUPERIOR PENETRATOR - 3D NOZZLE

The Superior Penetrator nozzle – 3D has a specific design to successfully navigate over small voids in the pipe. The placement of the Advanced 3D Hydro Mechanics in the nozzle is no more than 3/4" away from the hose connection. Thus, no turbulence inside the nozzle is created.

Advantages:

- Has a forward jet or pulling eye option
- Length of the nozzle
- Reduced water consumption
- Reduced operating costs

Applications: Pipe lines with off-sets, drop joints, voids etc.
Mud, silt and Sand

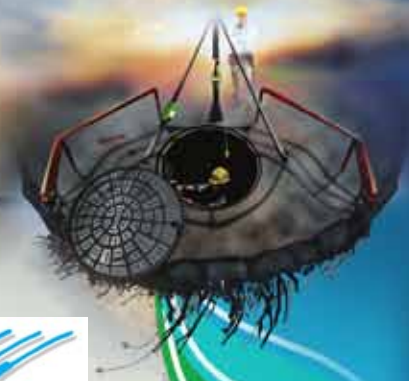
Technical Specifications:

- Advanced, Optimized 3D Hydro Mechanics™
- Replaceable threaded ceramic nozzle inserts
- Stainless steel construction
- Rear jet incidence is 12°
- From 3/4" – 1 1/4" threads
- Min. 30gpm @ 3/4"
- Max. 120gpm @ 1 1/4"



**Extended warranty 36 months
with ceramic nozzle inserts**

Part No.	Hose Connection	Nozzle inserts	Pipe Ø	Weight in lbs	Length in inch	Width in inch
1 – 0120-5030-C	3/4"	9	6" – 15"	9.99	8.50"	2.75"
1 – 0121-6020-C	1"	9	6" – 15"	9.99	8.50"	2.75"
1 – 0121-8020-C	1"	9	6" – 15"	9.99	8.50"	2.75"
1 – 0122-10020-C	1 1/4"	9	6" – 15"	9.99	8.50"	2.75"



STANDARD NOZZLES WITH FORWARD JETS

The Standard nozzle is very basic. It has rear jets and one forward penetrating jet which can be blocked.

Advantages:

- Light, maneuverable version
- Inexpensive, yet highly efficient

Applications: All around cleaning

Technical Specifications:

- Stainless steel construction
- Rear jet incidence is 22°
- ¼" – 1 ¼" hose connection
- Min. 10gpm @ ¼"
- Max. 120gpm @ 1 ¼"



Part No.	Hose Connection	Pipe Ø	Weight in lbs	Length in inch	Width in inch
1 – 0130-0840	¼"	4"	0.07	0.80"	0.76"
1 – 0131-1830	½"	6"	0.30	2.00"	1.20"
1 – 0132-5030	¾"	8"	0.70	2.40"	1.50"
1 – 0133-6020	1"	6" – 10"	0.90	3.25"	2.20"
1 – 0133-8020	1"	6" – 10"	0.90	3.25"	2.20"
1 – 0134-8020	1 ¼"	8" – 12"	1.70	3.63"	2.30"



ROTOR NOZZLE

Uniform rotary motion of the rotor allows constant and thorough cleaning of the interior wall of the pipe.

Advantages:

- Doesn't require bushings or bearings
- Low maintenance, no lubrication

Applications: Grease, light crusts and roots

Technical Specifications:

- Replaceable threaded ceramic nozzle inserts
- Stainless steel body and non corrosive brass
- Rear jet incidence is 22°
- 45°, 90° und 75° rotor jet incidence
- ½"-1 ¼" hose connection
- Min. 13gpm @ 1 ¼"
- Max. 120gpm @ 1 ¼"



Part No.	Hose Connection	Nozzle inserts	Pipe Ø	Weight in lbs	Length in inch	Width in inch
1 - 0140-1840-C	½"	6	4"	1.00	3.00"	1.50"
1 - 0141-5030-C	¾"	9	6"	6.50	4.25"	2.25"
1 - 0142-6020-C	1"	9	8" - 12"	5.00	4.25"	2.25"
1 - 0142-8020-C	1"	9	8" - 12"	5.00	4.25"	2.25"
1 - 0143-10020-C	1 ¼"	9	12" and up	9.99	5.75"	3.00"



Rocker Nozzle

The newly designed and engineered “Rocker Nozzle” from USB Duesen GmbH is a vibrating sewer cleaning nozzle. Similar in looks to the rotor nozzle the “Rocker” is able to remove the toughest deposits from the bottom of 4”-24” pipelines.

The offset rotation of the rotor causes aggressive vibration which breaks up the deposits.

ATTENTION: The “Rocker Nozzle” is intended for use in plastic (HDPE, PVC etc...) and cast iron pipes only. Never use it in clay and concrete pipes!!!

Advantages

- Removal of solid material on the bottom without damaging the pipe
- Can be used in confined pipe areas where chain cutters cannot fit
- Low maintenance, no lubrication required
- Doesn't require bushings or bearings

Applications

- Landfills and also removal of concrete and deposits such as calcium

Technical Specs

- Replaceable threaded ceramic and stainless steel inserts
- Stainless steel body and non corrosive brass
- Rear jet incidence is 22°
- 1”-1 ¼” hose connection
- Min. 50gpm @ ¾”
- Max. 120gpm @ 1 ¼”



Part No.	Hose Connection	Nozzle inserts	Pipe Ø	Weight in lbs	Length in inch	Width in inch
1-0150-1840-C	½”	6	4”	0.50	3.00”	1.50”
1-0151-5030-C	¾”	9	6”	5.00	4.25”	2.25”
1-0152-6020-C	1”	9	8”-12”	8.00	4.25”	2.25”
1-0152-8020-C	1”	9	8”-12”	8.00	4.25”	2.25”
1-0153-10020-C	1 ¼”	9	12” and up	9.00	5.75”	3.00”



ANTI BLASTER - 3D NOZZLE

The Anti Blaster nozzle is just that!
The specially designed angle of jet incidence reduces the probability of blowing toilets.

Advantages:

- Less likely to blow toilets
- Capable of being used with recycled water
- Reduced water consumption
- Reduced operating costs

Applications: Shallow sewer lines and sewer lines close to homes

Technical Specifications:

- Advanced, Optimized 3D Hydro Mechanics™
- Replaceable threaded ceramic nozzle inserts
- Stainless steel construction
- Rear jet incidence of 36°
- ¾"-1" threaded hose connection
- Min. 30gpm @ ¾"
- Max. 80gpm @ 1"



**Extended warranty 36 months
with ceramic nozzle inserts**

Part No.	Hose Connection	Nozzle inserts	Pipe Ø	Weight in lbs	Length in inch	Width inch
1-0362-6020-C	1"	9	6"-12"	4.0	4.00"	2.75"
1-0362-8020-C	1"	9	6"-12"	4.0	4.00"	2.75"



FJ PENETRATOR NOZZLE – 3D

The eggshaped Penetrator 3D nozzle has been designed to successfully navigate over offsets in the pipe. The FJ Penetrator removes obstructions and opens total blockages in no time.

Advantages:

- Increased performance and efficiency
- Reduced water consumption
- Reduced operating costs

Applications: Total blockage or obstruction in sewer lines

Technical Specifications:

- Advanced, Optimized 3D Hydro Mechanics™
- Replaceable threaded ceramic nozzle inserts
- Stainless steel construction
- Forward jets 0° / 15°
- Propulsion jets 15° / 25°
- From ½" – 1" threads
- Min. 18gpm @ ½"
- Max. 80gpm @ 1"



Extended warranty 36 months with ceramic nozzle inserts

Part No.	Hose Connection	Nozzle inserts	Pipe Ø	Weight in lbs	Length in inch	Width in inch
1-0190-1840-C	½"	10	4"-8"	0.5	2.30"	1.55"
1-0191-5030-C	¾"	12	4"-12"	1.6	2.80"	2.14"
1-0192-6020-C	1"	12	4"-15"	1.6	4.00"	2.60"
1-0192-8020-C	1"	12	4"-15"	1.6	4.00"	2.60"



ALUMINUM FLYING NOZZLE – 3D

The 3D Aluminum flying nozzle is the ideal hydrodynamic tool in mountainous and difficult terrain. The narrow angle of jet incidence and light weight of the nozzle all combine to guarantee powerful cleaning and unsurpassed traction.

Advantages:

- Light weight
- Capable of being used with recycled water
- Reduced water consumption
- Reduced operating costs

Applications: Mountainous, steep terrain

Technical Specification:

- Advanced, Optimized 3D Hydro Mechanics™
- Replaceable threaded steel nozzle inserts
- Aluminum construction
- Rear jet incidence of 7°
- ¾”-1” threaded hose connection
- Min. 40gpm @ ¾”
- Max. 80gpm @ 1”



Part No.	Hose Connection	Nozzle inserts	Pipe Ø	Weight in lbs	Length in inch	Width in inch
1 – 0160-5030-S	¾”	9	6” – 12”	1.50	5.20”	2.75”
1 – 0161-6020-S	1”	9	6” – 12”	1.50	5.20”	2.75”
1 – 0161-8020-S	1”	9	6” – 12”	1.50	5.20”	2.75”



FLYING NOZZLE - 3D

The 3D flying nozzle is an ideal tool for some of the toughest applications. The narrow angle of jet incidence gives this nozzle incredible traction and cleaning power.

Advantages:

- Tremendous cleaning efficiency
- Capable of being used with recycled water
- Reduced water consumption
- Reduced operating costs

Application: Preventative maintenance and hilly, difficult terrain. Large debris removal

Technical Specification:

- Advanced, Optimized 3D Hydro Mechanics™
- Replaceable threaded ceramic inserts
- Stainless steel construction
- Rear jet incidence of 7°
- ½" – 1 ¼" threaded hose connection
- Min. 13gpm @ ½"
- Max. 120gpm @ 1 ¼"



Flying nozzle – 3D small



Flying nozzle – 3D large

**Extended warranty 36 months
with ceramic nozzle inserts**

FLYING NOZZLE – 3D SMALL

Part No.	Hose Connection	Nozzle inserts	Pipe Ø	Weight in lbs	Length in inch	Width in inch
1 – 0162-1840-C	1/2"	6	4" – 8"	1.00	2.50"	1.50"
1 – 0163-5030-C	3/4"	8	6" – 10"	4.00	5.25"	2.60"
1 – 0164-6020-C	1"	8	6" – 12"	4.00	5.20"	2.75"
1 – 0164-8020-C	1"	8	6" – 12"	4.00	5.20"	2.75"

FLYING NOZZLE – 3D LARGE

Part No.	Hose Connection	Nozzle inserts	Pipe Ø	Weight in lbs	Length in inch	Width in inch
1 – 0165-5030-C	3/4"	8	6" – 15"	11.50	7.30"	3.80"
1 – 0166-6020-C	1"	8	6" – 15"	11.50	7.30"	3.80"
1 – 0166-8020-C	1"	8	6" – 15"	11.50	7.30"	3.80"
1 – 0167-10020-C	1 1/4"	8	12" and up	11.50	7.30"	3.80"



RADIAL CLEANING NOZZLE - 3D

This high performance nozzle is perfect for removing hard grease and scale that may be encrusted on the interior wall of the pipe. The fan jets clean the pipe interior all around, while the propulsion nozzle inserts provide superior transportation of obstructions to the manhole.

Advantages:

- Streak free cleaning
- All around pipe coverage
- Capable of being used with recycled water
- Reduced water consumption
- Reduced operating costs

Application: Excellent for grease (encrusted), scale, sand and silt

Technical Specifications:

- Advanced, Optimized 3D Hydro Mechanics™
- Replaceable threaded ceramic nozzle inserts
- Replaceable threaded steel fan jets
- Tempered stainless steel construction
- Rear jet incidence is 15°
- Rear fan jet incidence is 45°
- ¾"-1 ¼" hose connection
- Min. 40gpm @ ¾"
- Max. 120gpm @ 1 ¼"



**Extended warranty 36 months
with ceramic nozzle inserts**

Part No.	Hose Connection	Nozzle inserts	Pipe Ø	Weight in lbs	Length in inch	Width in inch
1 – 0170-6020-C	1"	12	8" – 20"	11.50	7.20"	3.80"
1 – 0170-8020-C	1"	12	8" – 20"	11.50	7.20"	3.80"



CLEANING NOZZLE – 3D

The Cleaning Nozzle-3D is a perfect nozzle for preventative maintenance and all around sewer cleaning. The rear inserts are at two different angles of jet incidence. This permits the nozzle to move material back towards the manhole while continuing to clean and propel up the pipeline.

Advantages:

- Available in a large 10 jet version
- Capable of being used with recycled water consumption
- Reduced operating costs

Applications: Excellent choice for sand, mud, silt and grease application

Technical Specifications:

- Advanced, Optimized 3D Hydro Mechanics™
- Replaceable threaded ceramic nozzle inserts
- Stainless steel construction
- Rear angle of jet incidence is 15° and 25°
- ½"-1 ¼" hose connection
- Min 12gpm @ ½"
- Max. 120gpm @ 1 ¼"



**Extended warranty 36 months
with ceramic nozzle inserts**

Part No.	Hose Connection	Nozzle inserts	Pipe Ø	Weight in lbs	Length in inch	Width in inch
1 – 0180-1840-C	½"	6	4"	1.00	2.39"	1.55"
1 – 0181-5030-C	¾"	8	6"	2.00	5.05"	2.73"
1 – 0182-6020-C	1"	8	6"	4.50	5.05"	2.73"
1 – 0182-8020-C	1"	8	6"	4.50	5.05"	2.73"
1 – 0183-6020-C	1"	10	6"	6.0	5.75"	3.12"
1 – 0183-8020-C	1"	10	6"	6.0	5.75"	3.15"



CHISEL NOZZLES

The Chisel nozzle performs excellently at difficult cleaning processes. The different forward jet options and sharp edges assure fast and reliable cleaning.

Advantages:

- The forward jet can be replaced with a heavy duty drill point
- Our 1" chisel nozzle has 8 rear jets for maximum propulsion and penetration
- Light weight, maneuverable
- Reduced water consumption
- Reduced operating costs

Applications: Total obstructions, blockages and pipe deformations

Technical Specifications:

- Replaceable threaded steel nozzle inserts
- Stainless steel construction
- Rear jet incidence is 22°
- Forward jet incidence is 0°
- Front jet incidence is 15°
- ½" - 1 ¼" hose connection
- Min. 14gpm @ ½"
- Max. 120gpm @ 1 ¼"



Part No.	Hose Connection	Nozzle inserts	Pipe Ø	Weight in lbs	Length in inch	Width in inch
1 - 0200-1840-S	½"	4	4"	0.5	2.15"	1.18"
1 - 0201-5030-S	¾"	12	4" - 8"	0.5	2.94"	1.88"
1 - 0202-6020-S	1"	12	8" - 12"	1.5	3.58"	2.28"
1 - 0202-8020-S	1"	12	8" - 15"	1.5	3.58"	2.28"



Part No.	Hose Connection	Nozzle inserts	Pipe Ø	Weight in lbs	Length in inch	Width in inch
1 - 0210-1840-S	½"	3	4"	0.5	3.1"	1.18"
1 - 0211-5030-S	¾"	11	4" - 8"	0.5	3.85"	1.88"
1 - 0212-6020-S	1"	11	8" - 12"	1.5	4.62"	2.28"
1 - 0212-8020-S	1"	11	8" - 15"	1.5	4.62"	2.28"



ULTIMATE CHISEL NOZZLE

The chisel nozzle with drill point performs excellently at difficult cleaning process. The drill point and sharp edges assure fast and reliable cleaning. The forward jets in combination with the drill point penetrates and removes total blockages.

Advantages:

- The forward jet can be replaced with a heavy duty drill point
- Our 1" chisel nozzle with drill point has 8 rear jets for maximum propulsion and penetration
- Light weight, maneuverable
- Reduced water consumption
- Reduced operating costs

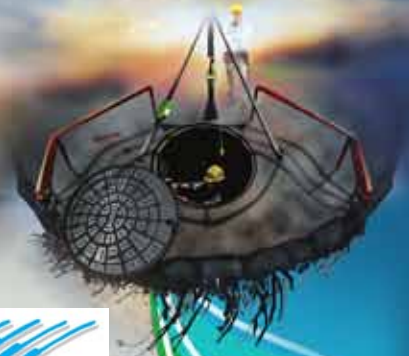
Applications: Total obstructions, blockages and pipe deformations.

Technical specifications:

- Replaceable threaded steel nozzle inserts
- Stainless steel construction
- Rear jet incidence is 22°
- Front jet incidence is 15°
- ½"-1 ¼" hose connection
- Min 14gpm @ ½"
- Max 120gpm @ 1 ¼"



Part No.	Hose Connection	Nozzle inserts	Pipe Ø	Weight in lbs	Length in inch	Width in inch
1 - 0220-6020-S	1"	10	6" - 15"	5.5	7.25"	2.93"
1 - 0220-8020-S	1"	10	6" - 24"	5.5	7.25"	2.93"
1 - 0221-10020-S	1 ¼"	10	12" and up	5.5	7.25"	2.93"



NOZZLE CASES

Our nozzle cases with 1" or 3/4" or 1/2" hose connections come with the sewer cleaning nozzles you'll need for all your applications



Nozzle case 1/2"

- Turbo 0
- Chisel nozzle w/ forward jet
- Cleaning nozzle – 3D
- Flying nozzle – 3D
- Flounder
- Pipe Wolf
- Rotor nozzle



- Primus Nozzle
- Flounder
- Chisel Nozzle
- Flying Nozzle – 3D
- Cleaning Nozzle – 3D

Flushing/Accessories



Nozzle Case 1”

- Pipe Wolf
- Rotor Nozzle
- Cleaning nozzle - 3D, 10 jet
- Chisel Nozzle
- Primus Nozzle
- Flying Nozzle – 3D



- Primus Nozzle
- Pipe Wolf
- Rotor Nozzle
- Grand Slam – 3D
- Ultimate Chisel Nozzle
- Superior Penetrator – 3D



DREDGER NOZZLE WITH 6, 8, 10 AND 14 NOZZLE INSERTS

The Dredger nozzles use Optimized Hydro Mechanics to take the water coming from a pressurized hose and convert it into unrivaled cleaning power. The roll bars allow the nozzle to upright itself in the line. All of the rear jets are concentrated on the bottom of the pipe.

Advantages:

- Can be used in tandem with another dredger nozzle
- Available in different sizes 6, 8, 10 or 14 jets
- Tremendous cleaning power
- Reduced water consumption
- Reduced operating costs

Application: For removal of heavy solids, silt, sand and sludge at bottom of a pipe.

Technical Specifications:

- Optimized Hydro Mechanics
- Replaceable threaded ceramic inserts
- Stainless steel construction
- $\frac{3}{4}$ " – 1 $\frac{1}{4}$ " hose connection





Flushing/Accessories



**Extended warranty 36 months
with ceramic nozzle inserts**

Part No.	Hose Connection	Nozzle inserts	Pipe Ø	Weight in lbs	Length in inch	Width in inch	Height in inch
1 - 0300-6020-C	1"	6	8" - 15"	22.0	20.80"	8.10"	6.70"
1 - 0300-8020-C	1"	6	8" - 15"	22.0	20.80"	8.10"	6.70"
1 - 0301-6020-C	1"	8	12" - 24"	40.0	19.50"	9.00"	7.50"
1 - 0301-8020-C	1"	8	12" - 24"	40.0	19.50"	9.00"	7.50"
1 - 0302-6020-C	1"	10	18" - 36"	56.0	20.50"	11.30"	9.25"
1 - 0302-8020-C	1"	10	18" - 36"	56.0	20.50"	11.30"	9.25"
1 - 0303-8020-C	1"	14	20" and up	59.0	19.80"	11.80"	9.80"
1 - 0303-10020-C	1" - 1 1/4"	14	20" and up	59.0	19.80"	11.80"	9.80"



ALPHAJET MANHOLE CLEANING NOZZLE

The Alphajet cleaning nozzle is designed to clean lift stations and manholes prior to rehabilitations. The Alphajet is actuated by water coming from the pressurized hose of the jetter truck. Four driving nozzles cause the 360° revolution in a horizontal plane.

Advantages:

- No confined space entry needed
- No lubrication or replacement of internal mechanical parts within the first 12 months of operation, thus making this nozzle extremely user friendly
- Controlled rotation
- Driving nozzles can be extended to accommodate various sizes of manholes/lift stations

Applications: Grease, sludge and crusts

Technical Specifications:

- Replaceable threaded, stainless steel / ceramic nozzle inserts
- Stainless steel construction
- 1" hose connection
- Min. 30gpm – Max. 60gpm @ 1"
- ¾" – 1" hose connection



Part No.	Hose Connection	Weight in lbs
1 – 0350	¾" - 1"	9.0



VENTURI NOZZLE

Venturi nozzles, also known as ejector nozzles, use the water coming from a pressurized hose. The water is smoothly turned around into an ejector thus creating a vacuum in the suction barrel. The high performance of the Venturi nozzle is only guaranteed if sufficient operating water is available. That means, depending on the size of the sewer or stormwater line, the Venturi nozzle has to be completely submerged underwater because the water level drops significantly once the Venturi nozzle has been put into operation. USB Sewer Equipment Corporation utilizes one concentrated water jet (one thick bundled jet provides a much higher efficiency than six small, thin water jets). The ejector connected to the high pressure stainless steel pipe is centered in front of the suction pipe and secured with flat, stainless steel bars. This eliminates the risk of debris blocking the suction pipe and/or damaging the ejector.

Advantages:

- The vacuum is able to remove large quantities of material towards the manhole
- Can clean large pipelines with high flow
- Doesn't require high PSI to operate
- Reduced water consumption
- Reduced operating costs

Applications: Large sewer lines 32" + with sand, silt, mud

Technical Specifications:

- Replaceable threaded nozzle tip
- Tempered stainless steel contraction
- Min. 60gpm @ 1"
- Max. 120gpm @ 1 1/4"



Part No.	Hose Connection	Weight in lbs
1 - 0310-6012	1"	62.0
1 - 0311-8012	1"	66.0
1 - 0312-8012	1 1/4"	76.0
1 - 0312-10012	1 1/4"	76.0



PIPE WOLF

The Pipe Wolf is a unique nozzle. A tempered stainless steel head is turbine driven and spins at approx. 6000-12000 rpm. For extreme applications, this is a highly efficient tool. The Pipe Wolf succeeds where standard hydrodynamic tools fail, thus increasing your productivity and reducing your operating cost. The Pipe Wolf should be a standard sewer cleaning tool on your truck, it is very impressive.

Advantages:

- Low maintenance, no lubrication required
- Capable of being used with recycled water
- Reduced water consumption
- Reduced operating costs

Applications: Total obstructions and blockages caused by roots, silt, grease etc.

Technical Specifications:

- Advanced Optimized 3D Hydro Mechanics™
- Replaceable threaded ceramic nozzle inserts
- Stainless steel body and tempered stainless steel head
- Rear angle of jet incidence is 22°



Part No.	Hose Connection	Pipe Ø	Weight in lbs	Length in inch	Width in inch
1 – 0320-1840-C	½"	4" – 6"	1.0	4.50"	2.10 "
1 – 0321-5030-C	¾"	6" – 15"	1.0	6.40"	2.60"
1 – 0321-6020-C	1"	6" – 15"	4.0	6.40"	2.60"
1 – 0321-8020-C	1"	6" – 15"	4.0	6.40"	2.60"

TURBO CHAIN CUTTERS

This innovative, highly reliable and efficient product is made of tempered stainless steel and offers superior drive and thrust efficiency. The chain retainer is driven by a high performance turbine thus achieving unsurpassed results in the removal of roots, grease and mineral deposits from 4" – 36" sewer lines.

The chains are not rigid, and do not damage the pipes in any way.

Off sets? No problem with our Turbos II – IV with continuously adjustable guide skid!

Advantages:

- Low maintenance (lubrication is not necessary)
- Easy and fast changeable chain retainers
- Low operating costs, inexpensive replacement chains
- Unique, continuously adjustable guide skids 6" – 12" (Turbo II), 8"-16" up to 24" (Turbo S400), 10" – 29" (Turbo III) and 15" – 36" (Turbo IV) sewer lines
- Threaded ceramic nozzle inserts
- For use with difficult pipes (off-sets, drop-joints etc.)
- Usable with recycled water

Application:

- For removing extensive root growth and total blockage
- For removing obstructions, such as calcium, grease, scale and crust



Turbo 0



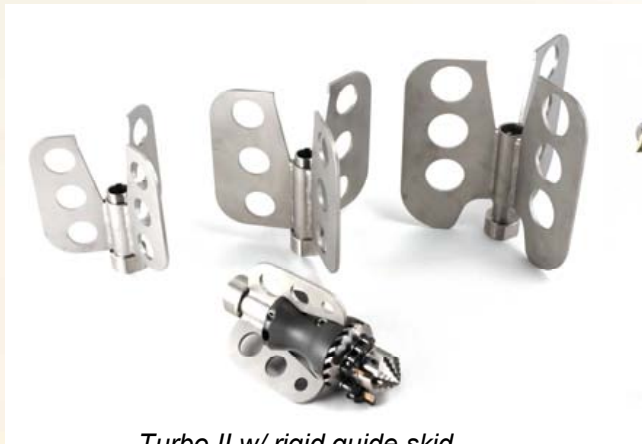
Turbo II w/ flexible guide skid



Turbo S 400 8"-16"



Turbo flexible guide skid



Turbo II w/ rigid guide skid



Turbo III w/ flexible guide skid



Turbo II flexible w/ accessories

Flushing/Accessories



Flushing/Accessories

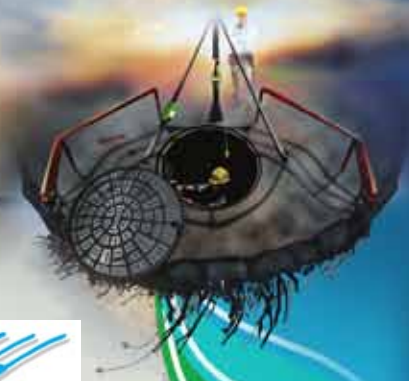


Turbo IV



Accessories for Turbo

Part No.	Description	Hose Connection	Pipe Ø	Weight in lbs	Length in inch
1-0400-1840-C	Turbo 0	½"	4"	1.50	4.00"
1-0402-5030-C	Turbo II w/ rigid guide skid 6"	¾"	6" – 12"	7.00	11.50"
1-0402-6020-C	Turbo II w/ rigid guide skid 6"	1"	6" – 12"	7.00	11.50"
1-0402-8020-C	Turbo II w/ rigid guide skid 6"	1"	6" – 12"	7.00	11.50"
1-0403-5030-C	Turbo II w/ flexible guide skid	¾"	6" – 12"	16.50	22.60"
1-0403-6020-C	Turbo II w/ flexible guide skid	1"	6" – 12"	16.50	22.60"
1-0403-8020-C	Turbo II w/ flexible guide skid	1"	6" – 12"	16.50	22.60"
1-0480-6020-C	Turbo S 400 w/ flexible guide skid	1"	8" – 16"	28.00	22.60"
1-0480-8020-C	Turbo S 400 w/ flexible guide skid	1"	8" – 16"	28.00	26.50"
1-0404-6020-C	Turbo III w/ flexible guide skid	1"	10" – 20"	43.00	32.50"
1-0404-8020-C	Turbo III w/ flexible guide skid	1"	10" – 20"	43.00	32.50"
1-0404-10020-C	Turbo III w/ flexible guide skid	1"	10" – 20"	43.00	32.50"
1-0405-8020-C	Turbo IV w/ flexible guide skid	1"	15" – 36"	80.00	41.00"
1-0405-10020-C	Turbo IV w/ flexible guide skid	1 ¼"	15" – 36"	80.00	41.00"



BLACK BLASTER

The Black Blaster is an exceptional nozzle and a great alternative to a stainless steel nozzle. This nozzle offers high cleaning efficiency.

Advantages:

- Relatively inexpensive
- Can be pulled
- Reduced water consumption
- Reduced operating costs

Applications: General sewer cleaning

Technical Specifications:

- Optimized Hydro Mechanics
- Replaceable threaded steel inserts
- Hardened tool steel construction
- Rear jet incidence is 18°
- ¾"-1" hose connection
- Min. 30gpm @ ¾"
- Max. 80gpm @ 1"



Part No.	Hose Connection	Nozzle inserts	Pipe Ø	Weight in lbs	Length in inch	Width inch
2-0100-6020-S	¾" / 1"	9	6" – 15"	5.5	3.65" w/o skid	3.05 w/o skid
2-0100-8020-S	1"	9	8" – 20"	5.5	3.65" w/o skid	3.05 w/o skid